

**Free practice 2 RESULTS**

Ord.	Nº	Entrant	Nat.	Driver	Nat.	St.	Driver 2	Nat.	St.	Vehicle	Cat.	Cla.	Laps	Best	Time	Gap	Interval	Km/h
1	11	Kessel Racing	CHE	Michael Broniszewski	POL	Bronze	Giacomo Piccini	ITA	Gold	Ferrari 458 Italia GT3	GTS	1º	22	14	2'04.743			168.596
2	90	AF Corse	ITA	Ezequiel Perez Companc	ARG	Bronze	Raffaele Giammaria	ITA	Gold	Ferrari 458 Italia GT3 2013	GTS	2º	23	21	2'05.179	0"436	0"436	168.009
3	52	AF Corse	ITA	Duncan Cameron	GBR	Bronze	Matt Griffin	IRL	Gold	Ferrari 458 Italia GT3 2013	GTS	3º	12	11	2'05.852	1"109	0"673	167.111
4	2	Teo Martin Motorsport	ESP	Miguel Ramos	PRT	Silver	Alvaro Parente	PRT	Platinum	McLaren 650S	GTS	4º	22	21	2'05.914	1"171	0"062	167.028
5	55	AF Corse	ITA	Claudio Sdanewitsch	DEU	Bronze	Ilya Melnikov	AUT	Bronze	Ferrari 458 Italia GT3 2013	GTAM	1º	24	13	2'06.368	1"625	0"454	166.428
6	15	Baporo Motorsport	ESP	Emiliano Lopez	ARG	Bronze	Jose M. Perez Aicart	ESP	Silver	Ferrari 458 Italia GT3 2013	GTS	5º	23	14	2'06.389	1"646	0"021	166.401
7	3	Scuderia Villorba Corse	ITA	Alessandro Balzan	ITA	Gold	Nicola Benucci	ITA	Bronze	Ferrari 458 Italia GT3	GTS	6º	24	9	2'06.396	1"653	0"007	166.391
8	76	Kox Racing	NLD	Peter Kox	NLD	Gold	Nico Pronk	NLD	Bronze	McLaren 650S	GTS	7º	22	20	2'06.409	1"666	0"013	166.374
9	51	AF Corse	ITA	Pasin Lathouras	THA	Silver	Michele Rugolo	ITA	Gold	Ferrari 458 Italia GT3 2013	GTS	8º	19	5	2'06.780	2"037	0"371	165.887
10	24	Team Parker Racing	GBR	Ian Loggie	GBR	Bronze	Callum Macleod	GBR	Silver	Audi R8 LMS Ultra	GTS	9º	24	7	2'07.055	2"312	0"275	165.528
11	16	AERT	ESP	Anton Nebylitskiy	RUS	Silver	Alvaro Barba	ESP	Gold	Lamborghini Gallardo FL2	GTS	10º	17	9	2'07.952	3"209	0"897	164.368
12	17	Lechner Racing	AUT	Mario Plachutta	AUT	Bronze	Walter Lechner	AUT	Silver	Mercedes SLS AMG GT3	GTS	11º	20	4	2'09.042	4"299	1"090	162.979
13	33	Swiss Team	CHE	Mauro Calamia	CHE	Bronze				Maserati Granturismo MC3 GT3	GTAM	2º	21	21	2'10.782	6"039	1"740	160.811
14	12	Solaris Motorsport	ITA	Francesco Sini	ITA	Gold	Stefano Costantini	ITA	Bronze	Chevrolet Corvette Z06 GT3	GTS	12º	11	3	2'11.627	6"884	0"845	159.779

Circuit Paul Ricard on April 24, 2015

At 19:02

RACE DIRECTOR

TIMEKEEPER

LAP ANALYSIS Free practice 2

Number	2			3			11			12			15			16		
	Lap Time	Partial	Speed	Lap Time	Partial	Speed	Lap Time	Partial	Speed	Lap Time	Partial	Speed	Lap Time	Partial	Speed	Lap Time	Partial	Speed
1 <sup>a</sup> - 1	0'36.199	0'36.199	247.707	0'43.519	0'43.519	178.218	0'36.548	0'36.548	251.163	0'37.352	0'37.352	240.000	0'39.063	0'39.063	216.433	2'47.224	2'47.224	147.340
1 <sup>a</sup> - 2	1'14.304	0'38.105		1'30.748	0'47.229		1'15.340	0'38.792		1'17.014	0'39.662		1'19.014	0'39.951		3'28.019	0'40.795	
1 <sup>a</sup> - 3	2'07.961	0'53.657		2'29.920	0'59.172		2'09.973	0'54.633		2'14.333	0'57.319		2'22.657	1'03.643	PIT	4'26.264	0'58.245	
2 <sup>a</sup> - 1	0'35.875	0'35.875	247.140	0'37.495	0'37.495	250.581	0'36.252	0'36.252	251.163	0'37.138	0'37.138	238.938	2'29.502	2'29.502	125.145	0'37.529	0'37.529	248.848
2 <sup>a</sup> - 2	1'13.590	0'37.715		1'17.290	0'39.795		1'14.552	0'38.300		1'16.701	0'39.563		3'10.532	0'41.030		1'16.091	0'38.562	
2 <sup>a</sup> - 3	2'07.258	0'53.668		2'12.099	0'54.809		2'08.969	0'54.417		2'11.627	0'54.926		4'08.432	0'57.900		2'11.310	0'55.219	
3 <sup>a</sup> - 1	0'41.015	0'41.015	246.014	0'35.528	0'35.528	250.581	0'36.175	0'36.175	251.749	0'37.043	0'37.043	242.153	0'36.618	0'36.618	252.928	0'36.693	0'36.693	250.000
3 <sup>a</sup> - 2	1'22.753	0'41.738		1'13.348	0'37.820		1'14.255	0'38.080		1'16.461	0'39.418		1'14.661	0'38.043		1'14.780	0'38.087	
3 <sup>a</sup> - 3	2'18.788	0'56.035		2'07.201	0'53.853		2'08.167	0'53.912		2'11.772	0'55.311		2'12.081	0'57.420		2'13.603	0'58.823	
4 <sup>a</sup> - 1	0'35.330	0'35.330	248.848	0'36.335	0'36.335	253.522	0'35.733	0'35.733	251.749	0'38.397	0'38.397	241.611	0'36.957	0'36.957	252.928	0'50.790	0'50.790	248.848
4 <sup>a</sup> - 2	1'13.110	0'37.780		1'14.381	0'38.046		1'14.245	0'38.512		1'18.023	0'39.626		1'14.998	0'38.041		1'29.070	0'38.280	
4 <sup>a</sup> - 3	2'06.110	0'53.000		2'13.061	0'58.680		2'08.107	0'53.862		2'28.959	1'10.936	PIT	2'09.848	0'54.850		2'23.512	0'54.442	
5 <sup>a</sup> - 1	0'36.550	0'36.550	246.576	0'35.489	0'35.489	251.163	0'36.471	0'36.471	251.163	29'05.151	29'05.151	139.176	0'37.938	0'37.938	252.337	0'36.135	0'36.135	248.848
5 <sup>a</sup> - 2	1'14.572	0'38.022		1'13.070	0'37.581		1'14.658	0'38.187		29'48.847	0'43.696		1'28.226	0'50.288		1'14.128	0'37.993	
5 <sup>a</sup> - 3	2'16.583	1'02.011	PIT	2'14.273	1'01.203		4'11.453	2'56.795	PIT	30'45.926	0'57.079		2'28.491	1'00.265		3'19.937	2'05.809	PIT
6 <sup>a</sup> - 1	4'51.217	4'51.217	148.966	0'44.059	0'44.059	170.887	0'56.726	0'56.726	135.339	0'36.776	0'36.776	240.535	0'36.135	0'36.135	251.749	5'23.470	5'23.470	130.593
6 <sup>a</sup> - 2	5'30.791	0'39.574		1'25.473	0'41.414		1'35.832	0'39.106		1'16.286	0'39.510		1'14.663	0'38.528		6'06.627	0'43.157	
6 <sup>a</sup> - 3	6'31.834	1'01.043		2'25.070	0'59.597		2'31.113	0'55.281		2'11.799	0'55.513		2'09.657	0'54.994		7'01.368	0'54.741	
7 <sup>a</sup> - 1	0'35.291	0'35.291	247.140	0'35.473	0'35.473	251.163	0'35.950	0'35.950	251.749	0'36.865	0'36.865	240.000	0'36.037	0'36.037	252.337	0'36.409	0'36.409	248.848
7 <sup>a</sup> - 2	1'12.895	0'37.604		1'13.169	0'37.696		1'13.626	0'37.676		1'16.057	0'39.192		1'14.003	0'37.966		1'14.238	0'37.829	
7 <sup>a</sup> - 3	2'06.719	0'53.824		2'06.431	0'53.262		2'07.489	0'53.863		2'24.707	1'08.650	PIT	2'08.269	0'54.266		2'08.458	0'54.220	
8 <sup>a</sup> - 1	0'35.160	0'35.160	248.276	0'35.014	0'35.014	252.337	0'35.324	0'35.324	252.928	5'44.269	5'44.269	133.499	0'35.713	0'35.713	252.337	0'36.016	0'36.016	250.000
8 <sup>a</sup> - 2	1'15.456	0'40.296		1'12.578	0'37.564		1'13.062	0'37.738		6'25.995	0'41.726		1'31.791	0'56.078		1'13.941	0'37.925	
8 <sup>a</sup> - 3	2'17.970	1'02.514	PIT	2'06.396	0'53.818		2'07.017	0'53.955		7'25.054	0'59.059		2'43.825	1'12.034	PIT	2'07.952	0'54.011	
9 <sup>a</sup> - 1	4'40.024	4'40.024	123.148	0'35.209	0'35.209	251.163	0'35.349	0'35.349	254.118	0'38.256	0'38.256	253.522	3'20.874	3'20.874	139.897	0'36.836	0'36.836	249.423
9 <sup>a</sup> - 2	5'21.715	0'41.691		1'13.059	0'37.850		1'13.219	0'37.870		1'18.338	0'40.082		3'58.887	0'38.013		1'14.805	0'37.969	
9 <sup>a</sup> - 3	6'16.882	0'55.167		2'18.786	1'05.727	PIT	2'07.185	0'53.966		2'17.210	0'58.872		4'52.321	0'53.434		2'19.129	1'04.324	PIT
10 <sup>a</sup> - 1	0'35.885	0'35.885	247.140	3'50.110	3'50.110	138.462	0'35.905	0'35.905	252.928	0'53.617	0'53.617	117.776	0'35.377	0'35.377	252.928	6'15.800	6'15.800	144.386
10 <sup>a</sup> - 2	1'14.031	0'38.146		4'29.916	0'39.806		1'16.176	0'40.271		2'16.702	1'23.085		1'13.073	0'37.696		6'56.514	0'40.714	
10 <sup>a</sup> - 3	2'08.353	0'54.322		5'26.002	0'56.086		6'01.666	4'45.490	PIT	4'15.125	1'58.423	PIT	2'06.790	0'53.717		7'53.349	0'56.835	
11 <sup>a</sup> - 1	0'36.098	0'36.098	247.707	0'36.225	0'36.225	248.849	0'55.566	0'55.566	149.792				0'35.791	0'35.791	254.118	0'37.665	0'37.665	246.576
11 <sup>a</sup> - 2	1'14.110	0'38.012		1'14.848	0'38.623		1'37.553	0'41.987					1'14.796	0'39.005		2'54.476	2'16.811	
11 <sup>a</sup> - 3	2'08.744	0'54.634		2'09.628	0'54.780		2'35.580	0'58.027					2'11.971	0'57.175		3'51.013	0'56.537	
12 <sup>a</sup> - 1	0'35.850	0'35.850	247.140	0'37.057	0'37.057	250.581	0'34.800	0'34.800	252.337				0'35.266	0'35.266	252.928	0'37.253	0'37.253	247.707
12 <sup>a</sup> - 2	1'13.909	0'38.059		1'15.072	0'38.015		1'12.243	0'37.443					1'12.785	0'37.519		1'16.996	0'39.743	
12 <sup>a</sup> - 3	2'08.669	0'54.760		2'10.174	0'55.102		2'05.068	0'52.825					2'06.820	0'54.035		2'13.861	0'56.865	
13 <sup>a</sup> - 1	0'35.997	0'35.997	247.140	0'35.973	0'35.973	251.163	0'34.708	0'34.708	252.928				0'35.328	0'35.328	252.337	0'37.038	0'37.038	248.276
13 <sup>a</sup> - 2	1'14.276	0'38.279		1'14.026	0'38.053		1'11.917	0'37.209					1'13.000	0'37.672		1'16.064	0'39.026	
13 <sup>a</sup> - 3	2'08.331	0'54.055		2'08.227	0'54.201		2'04.743	0'52.826					2'06.389	0'53.389		2'11.659	0'55.595	
14 <sup>a</sup> - 1	0'35.727	0'35.727	247.140	0'36.290	0'36.290	251.163	0'34.781	0'34.781	252.337				0'35.575	0'35.575	252.337	0'37.022	0'37.022	248.276
14 <sup>a</sup> - 2	1'13.939	0'38.212		1'15.107	0'38.817		1'12.531	0'37.750					1'13.269	0'37.694		1'15.993	0'38.971	
14 <sup>a</sup> - 3	2'07.717	0'53.778		2'09.478	0'54.371		3'20.380	2'07.849	PIT				2'14.955	1'01.686	PIT	2'11.350	0'55.357	
15 <sup>a</sup> - 1	0'36.030	0'36.030	247.707	0'35.766	0'35.766	250.581	0'52.730	0'52.730	153.847				2'31.864	2'31.864	131.068	0'36.662	0'36.662	248.848
15 <sup>a</sup> - 2	1'14.552	0'38.522		1'13.611	0'37.845		1'31.464	0'38.734					3'25.907	0'54.043		1'15.421	0'38.759	
15 <sup>a</sup> - 3	2'22.380	1'07.828	PIT	2'07.929	0'54.318		2'28.427	0'56.963					4'25.435	0'59.528		2'10.478	0'55.057	
16 <sup>a</sup> - 1	3'47.143	3'47.143	142.858	0'36.059	0'36.059	250.581	0'35.863	0'35.863	252.337				0'37.707	0'37.707	250.580	0'36.547	0'36.547	249.423
16 <sup>a</sup> - 2	4'26.996	0'39.853		1'14.353	0'38.294		1'13.921	0'38.058					1'22.958	0'45.251		1'15.428	0'38.881	
16 <sup>a</sup> - 3	5'21.230	0'54.234		2'08.529	0'54.176		2'09.036	0'55.115					2'18.725	0'55.767		2'24.839	1'09.411	PIT
17 <sup>a</sup> - 1	0'35.675	0'35.675	248.276	0'36.237	0'36.237	252.337	0'35.866	0'35.866	251.749				0'36.189	0'36.189	251.749			
17 <sup>a</sup> - 2	1'13.877	0'38.202		1'14.222	0'37.985		1'14.003	0'38.137					1'14.667	0'38.678				
17 <sup>a</sup> - 3	2'07.640	0'53.763		2'12.611	0'58.389		2'07.953	0'53.950					2'21.865	1'06.818				
18 <sup>a</sup> - 1	0'35.582	0'35.582	248.848	0'36.638	0'36.638	250.581	0'35.989	0'35.989	252.337				0'36.348	0'36.348	252.337			
18 <sup>a</sup> - 2	1																	

LAP ANALYSIS Free practice 2

Number	17			24			33			51			52			55		
	Lap Time	Partial	Speed	Lap Time	Partial	Speed	Lap Time	Partial	Speed	Lap Time	Partial	Speed	Lap Time	Partial	Speed	Lap Time	Partial	Speed
1 <sup>a</sup> - 1	0'36.981	0'36.981	244.344	0'36.083	0'36.083	246.576	0'57.658	0'57.658	142.293	0'37.412	0'37.412	251.749	0'38.292	0'38.292	222.681	0'37.922	0'37.922	247.707
1 <sup>a</sup> - 2	1'16.533	0'39.552		1'15.994	0'39.911		1'38.249	0'40.591		1'16.086	0'38.674		1'17.698	0'39.406		1'17.346	0'39.424	
1 <sup>a</sup> - 3	2'10.967	0'54.434		2'16.759	1'00.765		2'34.929	0'56.680		2'10.498	0'54.412		2'13.361	0'55.663		2'13.849	0'56.503	
2 <sup>a</sup> - 1	0'36.264	0'36.264	246.576	0'35.873	0'35.873	244.898	0'37.747	0'37.747	237.886	0'35.677	0'35.677	252.337	0'36.109	0'36.109	252.337	0'37.156	0'37.156	247.140
2 <sup>a</sup> - 2	1'15.236	0'38.972		1'14.097	0'38.224		1'17.929	0'40.182		1'13.334	0'37.657		1'14.304	0'38.195		1'16.216	0'39.060	
2 <sup>a</sup> - 3	2'10.031	0'54.795		2'10.495	0'56.398		2'14.332	0'56.403		2'07.360	0'54.026		2'08.472	0'54.168		2'12.511	0'56.295	
3 <sup>a</sup> - 1	0'36.187	0'36.187	248.276	0'35.919	0'35.919	245.455	0'37.722	0'37.722	239.468	0'35.497	0'35.497	252.928	0'38.266	0'38.266	247.707	0'37.056	0'37.056	248.276
3 <sup>a</sup> - 2	1'14.720	0'38.533		1'13.900	0'37.981		1'17.570	0'39.848		1'13.164	0'37.667		1'17.577	0'39.311		1'15.886	0'38.830	
3 <sup>a</sup> - 3	2'09.042	0'54.322		2'08.383	0'54.483		2'13.723	0'56.153		2'07.121	0'53.957		2'13.520	0'55.943		2'11.561	0'56.675	
4 <sup>a</sup> - 1	0'36.107	0'36.107	249.423	0'36.096	0'36.096	247.707	0'37.483	0'37.483	239.468	0'35.515	0'35.515	252.928	0'35.206	0'35.206	253.522	0'38.394	0'38.394	251.163
4 <sup>a</sup> - 2	1'14.511	0'38.404		1'14.911	0'38.815		1'17.360	0'39.877		1'13.091	0'37.576		1'12.752	0'37.546		1'17.181	0'38.787	
4 <sup>a</sup> - 3	2'17.645	1'03.134	PIT	2'09.055	0'54.144		2'14.194	0'56.834		2'06.780	0'53.689		2'05.880	0'53.128		2'16.020	0'58.839	
5 <sup>a</sup> - 1	1'46.416	1'46.416	150.628	0'35.683	0'35.683	246.014	0'38.282	0'38.282	238.411	0'35.459	0'35.459	252.928	0'35.195	0'35.195	252.928	0'37.005	0'37.005	247.140
5 <sup>a</sup> - 2	2'25.727	0'39.311		1'13.762	0'38.079		1'18.295	0'40.013		1'13.331	0'37.872		1'12.766	0'37.571		1'15.819	0'38.814	
5 <sup>a</sup> - 3	3'20.760	0'55.033		2'07.156	0'53.394		5'05.861	3'47.566	PIT	2'15.417	1'02.086	PIT	2'05.998	0'53.232		2'11.766	0'55.947	
6 <sup>a</sup> - 1	0'37.120	0'37.120	246.576	0'35.629	0'35.629	246.014	0'57.376	0'57.376	138.640	0'59.380	0'59.380	137.230	0'35.905	0'35.905	251.749	0'40.295	0'40.295	238.938
6 <sup>a</sup> - 2	1'16.598	0'39.478		1'13.640	0'38.011		1'37.139	0'39.763		6'38.016	0'38.636		1'13.283	0'37.378		1'20.238	0'39.943	
6 <sup>a</sup> - 3	2'11.837	0'55.239		2'07.055	0'53.415		2'33.465	0'56.326		7'32.863	0'54.847		2'17.946	1'04.663	PIT	2'31.879	1'11.641	PIT
7 <sup>a</sup> - 1	0'36.613	0'36.613	248.276	0'35.662	0'35.662	246.014	0'37.103	0'37.103	238.411	0'36.142	0'36.142	251.163	5'00.110	5'00.110	142.669	4'10.237	4'10.237	147.946
7 <sup>a</sup> - 2	1'15.375	0'38.762		1'13.777	0'38.115		1'16.565	0'39.462		1'14.298	0'38.156		5'38.042	0'37.932		4'52.183	0'41.946	
7 <sup>a</sup> - 3	2'09.917	0'54.542		2'17.116	1'03.339	PIT	2'12.000	0'55.435		2'09.224	0'54.926		6'31.544	0'53.502		5'50.388	0'58.205	
8 <sup>a</sup> - 1	0'36.576	0'36.576	247.140	3'54.251	3'54.251	123.429	0'37.208	0'37.208	219.513	0'37.093	0'37.093	251.749	0'35.991	0'35.991	254.717	0'35.860	0'35.860	251.163
8 <sup>a</sup> - 2	1'15.435	0'38.859		4'33.268	0'39.017		1'16.465	0'39.257		1'15.158	0'38.065		1'12.922	0'37.531		1'13.801	0'37.941	
8 <sup>a</sup> - 3	2'09.575	0'54.140		5'30.153	0'56.885		2'11.887	0'55.422		2'09.556	0'54.398		2'06.079	0'53.157		2'08.033	0'54.232	
9 <sup>a</sup> - 1	0'36.369	0'36.369	246.576	0'37.012	0'37.012	246.014	0'36.791	0'36.791	240.535	0'35.825	0'35.825	252.928	0'34.707	0'34.707	252.337	0'35.648	0'35.648	251.163
9 <sup>a</sup> - 2	1'15.089	0'38.720		1'15.837	0'38.825		1'16.205	0'39.414		1'13.877	0'38.052		1'12.234	0'37.527		1'13.505	0'37.857	
9 <sup>a</sup> - 3	2'11.699	0'56.610		2'12.112	0'56.275		2'11.402	0'55.197		2'08.137	0'54.260		2'06.158	0'53.924		2'07.482	0'53.977	
10 <sup>a</sup> - 1	0'37.065	0'37.065	247.140	0'41.272	0'41.272	247.707	0'36.764	0'36.764	238.939	0'36.010	0'36.010	252.928	0'34.930	0'34.930	252.928	0'35.279	0'35.279	248.848
10 <sup>a</sup> - 2	1'16.205	0'39.140		1'22.757	0'41.485		1'16.450	0'39.686		1'13.917	0'37.907		1'12.496	0'37.566		1'13.104	0'37.825	
10 <sup>a</sup> - 3	2'12.020	0'55.815		2'18.929	0'56.172		6'25.644	5'09.194	PIT	2'08.316	0'54.399		2'05.852	0'53.356		2'06.994	0'53.890	
11 <sup>a</sup> - 1	0'37.511	0'37.511	248.848	0'37.176	0'37.176	246.014	0'56.542	0'56.542	142.106	0'35.788	0'35.788	251.749	0'35.100	0'35.100	252.337	0'35.394	0'35.394	247.707
11 <sup>a</sup> - 2	1'17.031	0'39.520		1'15.913	0'38.737		1'36.417	0'39.875		1'13.838	0'38.050		1'12.630	0'37.530		1'12.921	0'37.527	
11 <sup>a</sup> - 3	2'11.808	0'54.777		2'13.695	0'57.782		2'31.866	0'55.449		2'09.631	0'55.793		2'15.649	1'03.019	PIT	2'06.692	0'53.771	
12 <sup>a</sup> - 1	0'36.525	0'36.525	247.707	0'37.690	0'37.690	247.140	0'37.093	0'37.093	236.843	0'35.931	0'35.931	252.928				0'35.186	0'35.186	251.749
12 <sup>a</sup> - 2	1'15.119	0'38.594		1'17.918	0'40.228		1'17.363	0'40.270		1'13.675	0'37.744					1'12.951	0'37.765	
12 <sup>a</sup> - 3	2'09.586	0'54.467		2'24.462	1'06.544	PIT	2'13.349	0'55.986		2'09.608	0'55.933					2'06.368	0'53.417	
13 <sup>a</sup> - 1	0'36.561	0'36.561	247.707	3'13.479	3'13.479	135.339	0'36.832	0'36.832	238.411	0'35.932	0'35.932	252.928				0'35.551	0'35.551	251.749
13 <sup>a</sup> - 2	1'15.303	0'38.742		3'52.414	0'38.935		1'16.308	0'39.476		1'13.773	0'37.841					1'14.436	0'38.885	
13 <sup>a</sup> - 3	2'09.508	0'54.205		4'48.284	0'55.870		2'12.118	0'55.810		2'17.408	1'03.635	PIT				2'09.675	0'55.239	
14 <sup>a</sup> - 1	0'36.460	0'36.460	248.276	0'36.569	0'36.569	245.455	0'37.651	0'37.651	238.411	0'36.805	0'36.805	154.066				0'35.550	0'35.550	251.163
14 <sup>a</sup> - 2	1'15.057	0'38.597		1'15.256	0'38.687		1'17.445	0'39.794		9'52.714	0'41.909					1'13.471	0'37.921	
14 <sup>a</sup> - 3	2'17.732	1'02.675	PIT	2'10.139	0'54.883		2'13.011	0'55.566		10'47.238	0'54.524					2'07.111	0'53.640	
15 <sup>a</sup> - 1	5'35.129	5'35.129	149.792	0'37.416	0'37.416	245.455	0'36.877	0'36.877	237.363	0'35.555	0'35.555	251.749				0'35.706	0'35.706	251.163
15 <sup>a</sup> - 2	6'14.440	0'39.311		1'16.315	0'38.899		1'16.175	0'39.298		1'13.375	0'37.820					1'13.356	0'37.650	
15 <sup>a</sup> - 3	7'09.820	0'55.380		2'11.243	0'54.928		2'11.412	0'55.237		2'07.292	0'53.917					2'17.766	1'04.410	PIT
16 <sup>a</sup> - 1	0'36.192	0'36.192	247.140	0'37.762	0'37.762	246.014	0'36.879	0'36.879	238.411	0'35.310	0'35.310	252.928				3'52.480	3'52.480	142.858
16 <sup>a</sup> - 2	1'15.042	0'38.850		1'16.462	0'38.700		1'16.417	0'39.538		1'13.214	0'37.904					4'39.533	0'47.053	
16 <sup>a</sup> - 3	2'09.423	0'54.381		2'11.513	0'55.051		5'22.169	4'05.752	PIT	2'11.828	0'58.614					5'35.819	0'56.286	
17 <sup>a</sup> - 1	0'35.992	0'35.992	247.707	0'46.452	0'46.452	245.455	0'57.870	0'57.870	142.669	0'35.768	0'35.768	252.337				0'37.098	0'37.098	248.276
17 <sup>a</sup> - 2	1'14.538	0'38.546		1'25.999	0'39.547		1'37.368	0'39.498		1'13.495	0'37.727					1'16.037	0'38.939	
17 <sup>a</sup> - 3	2'09.132	0'54.594		2'22.043	0'56.044		2'32.790	0'55.422		2'07.561	0'54.066					2'12.918	0'56.881	
18 <sup>a</sup> - 1	0'36.210	0'36.210	247.707	0'37.034	0'37.034	246.014	0'36.986	0'36.										

On April, 25-26  
Circuit Paul Ricard

LAP ANALYSIS Free practice 2

Number	76			90		
	Lap Time	Partial	Speed	Lap Time	Partial	Speed
1ª - 1	0'38.498	0'38.498	243.244	0'37.938	0'37.938	241.611
1ª - 2	1'19.080	0'40.582		1'17.206	0'39.268	
1ª - 3	2'17.534	0'58.454		2'13.410	0'56.204	
2ª - 1	0'37.967	0'37.967	246.014	0'37.342	0'37.342	244.344
2ª - 2	1'18.280	0'40.313		1'15.727	0'38.385	
2ª - 3	2'16.964	0'58.684		2'16.508	1'00.781	
3ª - 1	0'38.147	0'38.147	247.140	0'45.151	0'45.151	244.344
3ª - 2	1'19.079	0'40.932		1'25.883	0'40.732	
3ª - 3	2'18.174	0'59.095		2'20.738	0'54.855	
4ª - 1	0'38.504	0'38.504	247.140	0'35.761	0'35.761	244.344
4ª - 2	1'19.453	0'40.949		1'13.776	0'38.015	
4ª - 3	2'18.730	0'59.277		2'07.799	0'54.023	
5ª - 1	0'38.777	0'38.777	243.244	0'36.878	0'36.878	245.455
5ª - 2	1'19.296	0'40.519		1'15.054	0'38.176	
5ª - 3	2'18.247	0'58.951		2'09.184	0'54.130	
6ª - 1	0'40.816	0'40.816	246.014	0'35.481	0'35.481	242.697
6ª - 2	1'22.014	0'41.198		1'13.352	0'37.871	
6ª - 3	2'32.912	1'10.898	PIT	2'16.584	1'03.232	PIT
7ª - 1	2'23.042	2'23.042	126.316	1'12.255	1'12.255	134.496
7ª - 2	3'06.080	0'43.038		1'50.165	0'37.910	
7ª - 3	4'08.243	1'02.163		2'44.799	0'54.634	
8ª - 1	0'38.359	0'38.359	242.697	0'35.627	0'35.627	243.793
8ª - 2	1'18.622	0'40.263		1'13.455	0'37.828	
8ª - 3	2'15.936	0'57.314		2'09.222	0'55.767	
9ª - 1	0'37.649	0'37.649	247.140	0'35.877	0'35.877	244.898
9ª - 2	1'17.564	0'39.915		1'14.105	0'38.228	
9ª - 3	2'14.309	0'56.745		2'17.834	1'03.729	PIT
10ª - 1	0'38.360	0'38.360	246.014	2'22.206	2'22.206	126.910
10ª - 2	1'19.209	0'40.849		3'00.346	0'38.140	
10ª - 3	2'17.054	0'57.845		3'54.906	0'54.560	
11ª - 1	0'37.630	0'37.630	247.140	0'35.584	0'35.584	244.344
11ª - 2	1'17.385	0'39.755		1'13.353	0'37.769	
11ª - 3	2'14.177	0'56.792		2'07.349	0'53.996	
12ª - 1	0'38.802	0'38.802	247.140	0'35.423	0'35.423	244.344
12ª - 2	1'19.817	0'41.015		1'13.310	0'37.887	
12ª - 3	2'29.044	1'09.227	PIT	2'07.410	0'54.100	
13ª - 1	4'45.861	4'45.861	147.542	0'35.399	0'35.399	245.455
13ª - 2	5'24.242	0'38.381		1'13.217	0'37.818	
13ª - 3	6'18.050	0'53.808		2'07.266	0'54.049	
14ª - 1	0'35.437	0'35.437	244.898	0'36.333	0'36.333	244.898
14ª - 2	1'13.286	0'37.849		1'14.951	0'38.618	
14ª - 3	2'06.989	0'53.703		2'09.859	0'54.908	
15ª - 1	0'36.416	0'36.416	246.014	0'37.665	0'37.665	244.898
15ª - 2	1'14.497	0'38.081		1'17.443	0'39.778	
15ª - 3	2'08.138	0'53.641		2'22.478	1'05.035	PIT
16ª - 1	0'35.323	0'35.323	246.014	3'39.628	3'39.628	147.542
16ª - 2	1'13.223	0'37.900		4'18.668	0'39.040	
16ª - 3	2'06.464	0'53.241		5'13.287	0'54.619	
17ª - 1	0'35.169	0'35.169	248.276	0'35.787	0'35.787	245.455
17ª - 2	1'13.164	0'37.995		1'13.911	0'38.124	
17ª - 3	2'15.624	1'02.460	PIT	2'17.385	1'03.474	PIT
18ª - 1	4'18.076	4'18.076	150.000	2'23.749	2'23.749	144.001
18ª - 2	4'56.116	0'38.040		3'03.045	0'39.296	
18ª - 3	5'49.494	0'53.378		3'57.118	0'54.073	
19ª - 1	0'35.333	0'35.333	247.140	0'35.146	0'35.146	245.455
19ª - 2	1'13.055	0'37.722		1'12.683	0'37.537	
19ª - 3	2'06.409	0'53.354		2'05.379	0'52.696	
20ª - 1	0'35.429	0'35.429	248.848	0'35.175	0'35.175	243.793
20ª - 2	1'13.109	0'37.680		1'12.596	0'37.421	
20ª - 3	2'06.750	0'53.641		2'05.179	0'52.583	
21ª - 1	0'35.407	0'35.407	248.848	0'35.778	0'35.778	244.898
21ª - 2	1'13.311	0'37.904		1'14.300	0'38.522	
21ª - 3	2'19.921	1'06.610	PIT	2'09.154	0'54.854	
22ª - 1				0'35.436	0'35.436	245.455
22ª - 2				1'12.814	0'37.378	
22ª - 3				2'17.116	1'04.302	PIT
23ª - 1						
23ª - 2						
23ª - 3						

Ideal Lap	
0'35.169	0'35.169
1'12.849	0'37.680
2'06.090	0'53.241

Ideal Lap	
0'35.146	0'35.146
1'12.524	0'37.378
2'05.107	0'52.583

Ideal Best Lap	
0'34.707	0'34.707
1'11.062	0'36.355
2'03.645	0'52.583



### Free practice 2 Sectors Results

Sector - 1			Sector - 2			Sector - 3			Ideal Lap vs Best Lap				
Ord.	Nº Driver	Time	Nº Driver	Time	Nº Driver	Time	Ord.	Nº Driver	Ideal Lap	Best Lap	Ord.		
1	52 Cameron - Griffin	34.707	2 Ramos - Parente	36.355	90 Perez - Giammaria	52.583	1	2 Ramos - Parente	2'04.515	2'05.914	4		
2	11 Broniszewski - Piccini	34.708	11 Broniszewski - Piccini	37.209	11 Broniszewski - Piccini	52.825	2	11 Broniszewski - Piccini	2'04.742	2'04.743	1		
3	3 Balzan - Benucci	35.014	52 Cameron - Griffin	37.378	2 Ramos - Parente	53.000	3	90 Perez - Giammaria	2'05.107	2'05.179	2		
4	90 Perez - Giammaria	35.146	90 Perez - Giammaria	37.378	52 Cameron - Griffin	53.128	4	52 Cameron - Griffin	2'05.213	2'05.852	3		
5	2 Ramos - Parente	35.160	15 Lopez - Perez	37.519	76 Kox - Pronk	53.241	5	3 Balzan - Benucci	2'05.840	2'06.396	7		
6	76 Kox - Pronk	35.169	55 Sdanewitsch - Melnikov	37.527	3 Balzan - Benucci	53.262	6	76 Kox - Pronk	2'06.090	2'06.409	8		
7	55 Sdanewitsch - Melnikov	35.186	3 Balzan - Benucci	37.564	15 Lopez - Perez	53.389	7	55 Sdanewitsch - Melnikov	2'06.130	2'06.368	5		
8	15 Lopez - Perez	35.266	51 Lathouras - Rugolo	37.576	24 Loggie - Macleod	53.394	8	15 Lopez - Perez	2'06.174	2'06.389	6		
9	51 Lathouras - Rugolo	35.310	76 Kox - Pronk	37.680	55 Sdanewitsch - Melnikov	53.417	9	51 Lathouras - Rugolo	2'06.575	2'06.780	9		
10	24 Loggie - Macleod	35.629	16 Nebylitskiy - Barba	37.829	51 Lathouras - Rugolo	53.689	10	24 Loggie - Macleod	2'07.004	2'07.055	10		
11	17 Plachutta - Lechner	35.992	24 Loggie - Macleod	37.981	16 Nebylitskiy - Barba	54.011	11	16 Nebylitskiy - Barba	2'07.856	2'07.952	11		
12	16 Nebylitskiy - Barba	36.016	17 Plachutta - Lechner	38.404	17 Plachutta - Lechner	54.140	12	17 Plachutta - Lechner	2'08.536	2'09.042	12		
13	33 Mauro Calamia	36.464	33 Mauro Calamia	38.890	12 Sini - Costantini	54.926	13	33 Mauro Calamia	2'10.497	2'10.782	13		
14	12 Sini - Costantini	36.776	12 Sini - Costantini	39.192	33 Mauro Calamia	55.143	14	12 Sini - Costantini	2'10.894	2'11.627	14		

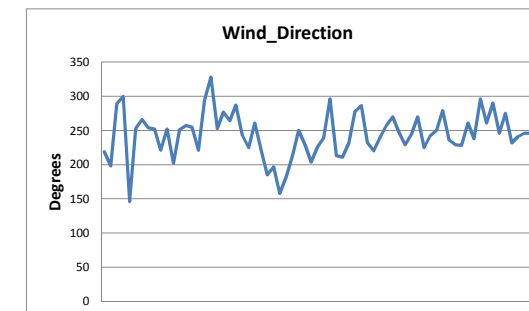
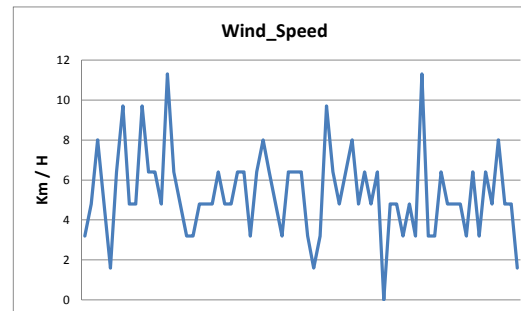
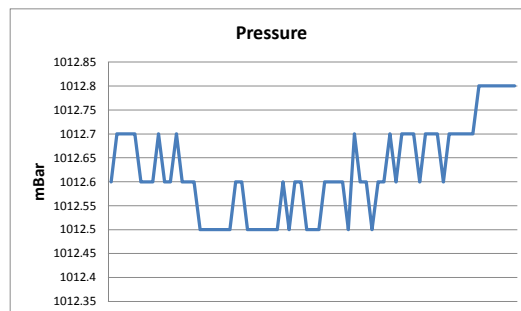
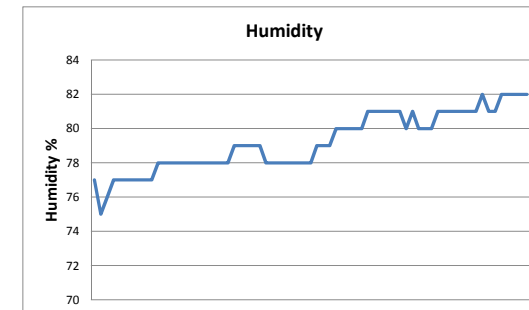
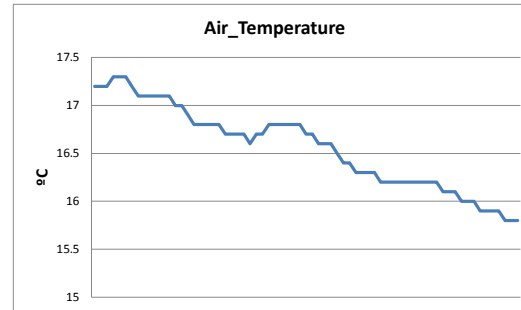
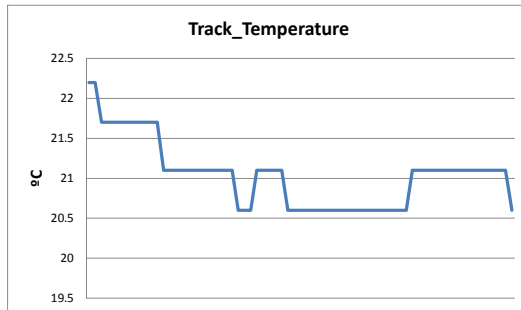
**Free practice 2 MAXIMUM SPEED**

Ord.	Nº	Entrant	Nat.	Driver	Nat.	St.	Driver_2	Nat.	St.	Vehicle	Cat.	Cl.	Km/h
1	52	AF Corse	ITA	Duncan Cameron	GBR	Bronze	Matt Griffin	IRL	Gold	Ferrari 458 Italia GT3 2013	GTS	1º	254.717
2	11	Kessel Racing	CHE	Michael Broniszewski	POL	Bronze	Giacomo Piccini	ITA	Gold	Ferrari 458 Italia GT3	GTS	2º	254.118
3	15	Baporo Motorsport	ESP	Emiliano Lopez	ARG	Bronze	Jose M. Perez Aicart	ESP	Silver	Ferrari 458 Italia GT3 2013	GTS	3º	254.118
4	3	Scuderia Villorba Corse	ITA	Alessandro Balzan	ITA	Gold	Nicola Benucci	ITA	Bronze	Ferrari 458 Italia GT3	GTS	4º	253.522
5	12	Solaris Motorsport	ITA	Francesco Sini	ITA	Gold	Stefano Costantini	ITA	Bronze	Chevrolet Corvette Z06 GT3	GTS	5º	253.522
6	51	AF Corse	ITA	Pasin Lathouras	THA	Silver	Michele Rugolo	ITA	Gold	Ferrari 458 Italia GT3 2013	GTS	6º	252.928
7	55	AF Corse	ITA	Claudio Sdanewitsch	DEU	Bronze	Ilya Melnikov	AUT	Bronze	Ferrari 458 Italia GT3 2013	GTAM	1º	251.749
8	16	AERT	ESP	Anton Nebylitskiy	RUS	Silver	Alvaro Barba	ESP	Gold	Lamborghini Gallardo FL2	GTS	7º	250.000
9	17	Lechner Racing	AUT	Mario Plachutta	AUT	Bronze	Walter Lechner	AUT	Silver	Mercedes SLS AMG GT3	GTS	8º	249.423
10	2	Teo Martin Motorsport	ESP	Miguel Ramos	PRT	Silver	Alvaro Parente	PRT	Platinum	McLaren 650S	GTS	9º	248.848
11	76	Kox Racing	NLD	Peter Kox	NLD	Gold	Nico Pronk	NLD	Bronze	McLaren 650S	GTS	10º	248.848
12	24	Team Parker Racing	GBR	Ian Loggie	GBR	Bronze	Callum Macleod	GBR	Silver	Audi R8 LMS Ultra	GTS	11º	247.707
13	90	AF Corse	ITA	Ezequiel Perez Companc	ARG	Bronze	Raffaele Giammaria	ITA	Gold	Ferrari 458 Italia GT3 2013	GTS	12º	245.455
14	33	Swiss Team	CHE	Mauro Calamia	CHE	Bronze				Maserati Granturismo MC3 GT3	GTAM	2º	240.535

**WEATHER REPORT Free practice 2**

Circuit Paul Ricard  
On April, 25-26

Track Status **DRY**



## FREE PRACTICES RESULTS

Ord.	Nº	Entrant	Nat.	Driver	Nat.	St.	Driver 2	Nat.	St.	Vehicle	Cat.	Cla.	Laps	Laps1	BL1	Time-1	Laps2	BL2	Time-2	Best	Km/h
1	11	Kessel Racing	CHE	Michael Broniszewski	POL	Bronze	Giacomo Piccini	ITA	Gold	Ferrari 458 Italia GT3	GTS	1º	40	18	15	2'06.963	22	14	2'04.743	<b>2'04.743</b>	168.596
2	52	AF Corse	ITA	Duncan Cameron	GBR	Bronze	Matt Griffin	IRL	Gold	Ferrari 458 Italia GT3 2013	GTS	2º	22	10	9	2'05.121	12	11	2'05.852	<b>2'05.121</b>	168.087
3	90	AF Corse	ITA	Ezequiel Perez Companc	ARG	Bronze	Raffaele Giammaria	ITA	Gold	Ferrari 458 Italia GT3 2013	GTS	3º	43	20	5	2'05.885	23	21	2'05.179	<b>2'05.179</b>	168.009
4	15	Baporo Motorsport	ESP	Emiliano Lopez	ARG	Bronze	Jose M. Perez Aicart	ESP	Silver	Ferrari 458 Italia GT3 2013	GTS	4º	45	22	4	2'05.209	23	14	2'06.389	<b>2'05.209</b>	167.969
5	3	Scuderia Villorba Corse	ITA	Alessandro Balzan	ITA	Gold	Nicola Benucci	ITA	Bronze	Ferrari 458 Italia GT3	GTS	5º	47	23	4	2'05.537	24	9	2'06.396	<b>2'05.537</b>	167.530
6	2	Teo Martin Motorsport	ESP	Miguel Ramos	PRT	Silver	Alvaro Parente	PRT	Platinum	McLaren 650S	GTS	6º	39	17	7	2'06.891	22	21	2'05.914	<b>2'05.914</b>	167.028
7	51	AF Corse	ITA	Pasin Lathouras	THA	Silver	Michele Rugolo	ITA	Gold	Ferrari 458 Italia GT3 2013	GTS	7º	37	18	7	2'05.948	19	5	2'06.780	<b>2'05.948</b>	166.983
8	55	AF Corse	ITA	Claudio Sdanewitsch	DEU	Bronze	Ilya Melnikov	AUT	Bronze	Ferrari 458 Italia GT3 2013	GTAM	1º	44	20	15	2'07.316	24	13	2'06.368	<b>2'06.368</b>	166.428
9	76	Kox Racing	NLD	Peter Kox	NLD	Gold	Nico Pronk	NLD	Bronze	McLaren 650S	GTS	8º	42	20	4	2'06.622	22	20	2'06.409	<b>2'06.409</b>	166.374
10	24	Team Parker Racing	GBR	Ian Loggie	GBR	Bronze	Callum Macleod	GBR	Silver	Audi R8 LMS Ultra	GTS	9º	43	19	9	2'07.850	24	7	2'07.055	<b>2'07.055</b>	165.528
11	17	Lechner Racing	AUT	Mario Plachutta	AUT	Bronze	Walter Lechner	AUT	Silver	Mercedes SLS AMG GT3	GTS	10º	40	20	14	2'07.614	20	4	2'09.042	<b>2'07.614</b>	164.803
12	16	AERT	ESP	Anton Nebylitskiy	RUS	Silver	Alvaro Barba	ESP	Gold	Lamborghini Gallardo FL2	GTS	11º	17				17	9	2'07.952	<b>2'07.952</b>	164.368
13	33	Swiss Team	CHE	Mauro Calamia	CHE	Bronze				Maserati Granturismo MC3 GT3	GTAM	2º	35	14	10	2'12.796	21	21	2'10.782	<b>2'10.782</b>	160.811
14	12	Solaris Motorsport	ITA	Francesco Sini	ITA	Gold	Stefano Costantini	ITA	Bronze	Chevrolet Corvette Z06 GT3	GTS	12º	11				11	3	2'11.627	<b>2'11.627</b>	159.779

Circuit Paul Ricard on April 24, 2015

At 19:04

RACE DIRECTOR

TIMEKEEPER



Santísima Trinidad 30 28010 MADRID  
Tel y Fax 91.448.32.06  
www.cronococa.com  
e-mail: info@cronococa.com




Juan Bravo 17 28006 MADRID  
Tel 91.432.27.50  
www.atsport.es  
e-mail: info@atsport.es