



Circuit de SPA
On September, 5 - 6

Qualifying - 1 RESULTS

Ord.	Nº	Entrant	Nat.	Driver	Nat.	St.	Driver 2	Nat.	St.	Vehicle	Cat.	Clas.	Laps	Best	Time	Gap	Interval	Km/h
1	59	Teo Martin M.	ESP	<u>Rob Bell</u>	GBR	Platinum	Andrew Watson	GBR	Silver	McLaren 650S	GP	1º	9	7	2'37.538			160.053
2	51	AF Corse	ITA	Pasin Lathouras	THA	Silver	<u>Michele Rugolo</u>	ITA	Gold	Ferrari 458 Italia	GP	2º	8	8	2'38.028	0"490	0"490	159.557
3	2	Teo Martin M.	ESP	<u>Miguel Ramos</u>	PRT	Silver	Álvaro Parente	PRT	Platinum	McLaren 650S	GP	3º	11	11	2'38.394	0"856	0"366	159.188
4	8	Aston Martin Brussels R.	BEL	Tim Verbergt	BEL	Gold	<u>Michael Schmetz</u>	BEL	Bronze	Aston Martin Vantage	GP	4º	10	5	2'38.858	1"320	0"464	158.723
5	10	TF Sport	GBR	<u>Evan Hankey</u>	GBR	Silver	Salih Yoluc	TUR	Bronze	Aston Martin Vantage	GA	1º	11	8	2'39.031	1"493	0"173	158.550
6	3	S. Villorba Corse	ITA	<u>Alessandro Balzan</u>	ITA	Gold	Nicola Benucci	ITA	Bronze	Ferrari 458 Italia	GP	5º	11	7	2'39.378	1"840	0"347	158.205
7	16	AERT	ESP	Anton Nebylitskiy	RUS	Silver	<u>Matias Russo</u>	ARG	Gold	Lamborghini Gallardo	GP	6º	10	10	2'39.740	2"202	0"362	157.847
8	90	AF Corse	ITA	<u>Ezequiel Pérez Companc</u>	ARG	Bronze	Raffaele Giammaria	ITA	Gold	Ferrari 458 Italia	GP	7º	11	11	2'40.162	2"624	0"422	157.431
9	62	Radical Sportscars	GBR	<u>James Abbott</u>	GBR	Bronze				Radical RXC V8	CA	1º	9	9	2'41.277	3"739	1"115	156.342
10	53	AF Corse	ITA	<u>Filipe Barreiros</u>	PRT	Bronze				Ferrari 458 Italia	GA	2º	11	9	2'41.829	4"291	0"552	155.809
11	9	H&R Spezialfedern GmbH & Co.KG	DEU	<u>Jürgen Alzen</u>	DEU	Bronze				Ford GT	GA	3º	11	9	2'44.003	6"465	2"174	153.744
12	49	AF Corse	ITA	Yannick Mallegol	FRA	Bronze	<u>Howard Blank</u>	ITA	Bronze	Ferrari 458 Italia	GA	4º	10	10	2'44.090	6"552	0"087	153.662
13	55	AF Corse	ITA	<u>Claudio Sdanewitsch</u>	DEU	Bronze	Stéphane Lémeret	BEL	Bronze	Ferrari 458 Italia	GA	5º	9	9	2'46.441	8"903	2"351	151.492

Circuit de SPA on September 05, 2015

At 09:33

RACE DIRECTOR

TIMEKEEPER



Santísima Trinidad 30 28010 MADRID
Tel y Fax 91.448.32.06
www.cronococa.com
e-mail: info@cronococa.com



Juan Bravo 17 28006 MADRID
Tel 91.432.27.50
www.gtsport.es
e-mail: info@gtsport.es

On September, 5 - 6
Circuit de SPA

LAP ANALYSIS Qualifying - 1

Number	2			3			8			9			10			16		
	Lap Time	Partial	Speed	Lap Time	Partial	Speed	Lap Time	Partial	Speed	Lap Time	Partial	Speed	Lap Time	Partial	Speed	Lap Time	Partial	Speed
1 ^a - 1	0'44.723	0'44.723	219.960	0'44.484	0'44.484	228.330	0'44.161	0'44.161	214.712	0'45.644	0'45.644	196.722	0'44.250	0'44.250	223.603	0'44.208	0'44.208	217.304
1 ^a - 2	2'01.237	1'16.514		2'01.298	1'16.814		1'59.178	1'15.017		2'04.490	1'18.846		1'59.784	1'15.534		2'00.981	1'16.773	
1 ^a - 3	2'43.831	0'42.594		2'43.199	0'41.901		2'40.572	0'41.394		2'48.103	0'43.613		2'42.182	0'42.398		2'42.995	0'42.014	
2 ^a - 1	0'43.929	0'43.929	215.140	0'43.575	0'43.575	221.312	0'43.861	0'43.861	216.001	0'45.302	0'45.302	197.441	0'43.768	0'43.768	214.286	0'44.238	0'44.238	192.171
2 ^a - 2	2'00.944	1'17.015		1'59.752	1'16.177		1'58.470	1'14.609		2'03.651	1'18.349		1'59.283	1'15.515		1'59.962	1'15.724	
2 ^a - 3	2'42.850	0'41.906		2'41.538	0'41.786		2'40.036	0'41.566		2'48.716	0'45.065		2'40.665	0'41.382		2'41.816	0'41.854	
3 ^a - 1	0'43.933	0'43.933	220.409	0'43.459	0'43.459	232.259	0'43.938	0'43.938	200.001	0'46.397	0'46.397	194.245	0'43.780	0'43.780	226.891	0'44.387	0'44.387	201.870
3 ^a - 2	1'59.795	1'15.862		2'00.419	1'16.960		1'59.009	1'15.071		2'05.505	1'19.108		1'59.205	1'15.425		2'00.114	1'15.727	
3 ^a - 3	2'41.623	0'41.828		2'49.595	0'49.176	PIT	2'44.949	0'45.940		2'49.073	0'43.568		2'40.599	0'41.394		2'41.720	0'41.606	
4 ^a - 1	0'43.417	0'43.417	213.862	1'52.812	1'52.812	189.807	0'43.148	0'43.148	213.018	0'45.309	0'45.309	205.324	0'43.518	0'43.518	215.569	0'44.255	0'44.255	204.546
4 ^a - 2	1'59.649	1'16.232		3'10.086	1'17.274		1'57.878	1'14.730		2'02.419	1'17.110		1'58.900	1'15.382		2'00.402	1'16.147	
4 ^a - 3	2'40.936	0'41.287		4'00.702	0'50.616		2'38.858	<u>0'40.980</u>		2'45.044	0'42.625		2'40.348	0'41.448		2'42.279	0'41.877	
5 ^a - 1	0'44.911	0'44.911	186.852	0'43.210	0'43.210	216.868	0'43.830	0'43.830	229.788	0'44.959	0'44.959	196.722	0'43.678	0'43.678	217.743	0'44.062	0'44.062	206.501
5 ^a - 2	2'02.335	1'17.424		1'58.165	<u>1'14.955</u>		1'58.035	1'14.205		2'02.680	1'17.721		2'00.374	1'16.696		1'59.719	1'15.657	
5 ^a - 3	2'55.191	0'52.856	PIT	2'39.628	0'41.463		2'39.302	0'41.267		2'45.083	0'42.403		2'48.736	0'48.362	PIT	2'41.164	0'41.445	
6 ^a - 1	2'59.491	2'59.491	174.475	0'42.755	0'42.755	223.141	0'43.279	0'43.279	232.759	0'44.505	0'44.505	204.934	2'46.749	2'46.749	195.653	0'43.741	<u>0'43.741</u>	205.324
6 ^a - 2	4'20.444	1'20.953		1'58.011	1'15.256		1'58.776	1'15.497		2'02.076	1'17.571		4'07.453	1'20.704		1'59.019	1'15.278	
6 ^a - 3	5'02.566	0'42.122		<u>2'39.378</u>	0'41.367		2'50.938	0'52.162	PIT	2'44.790	0'42.714		4'49.733	0'42.280		2'40.366	0'41.347	
7 ^a - 1	0'43.714	0'43.714	196.722	0'43.086	0'43.086	241.072	2'16.841	2'16.841	209.303	0'44.307	<u>0'44.307</u>	223.141	0'43.087	<u>0'43.087</u>	226.416	0'51.684	0'51.684	180.000
7 ^a - 2	1'59.104	1'15.390		2'00.141	1'17.055		3'31.022	<u>1'14.181</u>		2'02.183	1'17.876		1'58.005	<u>1'14.918</u>		2'10.094	1'18.410	
7 ^a - 3	2'40.209	0'41.105		2'42.296	0'42.155		4'12.891	0'41.869		2'44.521	0'42.338		2'39.031	<u>0'41.026</u>		2'58.762	0'48.668	PIT
8 ^a - 1	0'43.394	0'43.394	207.294	0'43.111	0'43.111	213.018	0'43.051	<u>0'43.051</u>	231.760	0'44.347	0'44.347	191.830	0'43.253	0'43.253	244.344	3'42.153	3'42.153	199.263
8 ^a - 2	1'57.992	1'14.598		1'58.572	1'15.461		1'58.087	1'15.036		2'01.682	1'17.335		1'58.646	1'15.393		4'57.936	1'15.783	
8 ^a - 3	2'38.923	0'40.931		2'39.764	<u>0'41.192</u>		2'39.436	0'41.349		<u>2'44.003</u>	<u>0'42.321</u>		2'39.930	0'41.284		5'39.627	0'41.691	
9 ^a - 1	0'43.185	<u>0'43.185</u>	203.774	0'42.754	<u>0'42.754</u>	226.416	0'43.946	0'43.946	226.891	0'44.821	0'44.821	184.932	0'43.108	0'43.108	222.223	0'43.787	0'43.787	222.681
9 ^a - 2	1'58.115	1'14.930		1'58.436	1'15.682		1'59.131	1'15.185		2'01.603	<u>1'16.782</u>		1'58.128	1'15.020		1'58.671	<u>1'14.884</u>	
9 ^a - 3	2'39.118	0'41.003		2'39.950	0'41.514		2'47.534	0'48.403		2'44.648	0'43.045		2'39.450	0'41.322		2'39.740	<u>0'41.069</u>	
10 ^a - 1	0'43.246	0'43.246	219.067	0'42.885	0'42.885	236.324				0'44.890	0'44.890	197.081	0'43.287	0'43.287	222.681			
10 ^a - 2	1'57.710	<u>1'14.464</u>		1'58.261	1'15.376					2'02.644	1'17.754		1'58.575	1'15.288				
10 ^a - 3	<u>2'38.394</u>	<u>0'40.684</u>		2'39.613	0'41.352					3'04.531	1'01.887		2'39.780	0'41.205				

Ideal Lap	
0'43.185	0'43.185
1'57.649	1'14.464
2'38.333	0'40.684

Ideal Lap	
0'42.754	0'42.754
1'57.709	1'14.955
2'38.901	0'41.192

Ideal Lap	
0'43.051	0'43.051
1'57.232	1'14.181
2'38.212	0'40.980

Ideal Lap	
0'44.307	0'44.307
2'01.089	1'16.782
2'43.410	0'42.321

Ideal Lap	
0'43.087	0'43.087
1'58.005	1'14.918
2'39.031	0'41.026

Ideal Lap	
0'43.741	0'43.741
1'58.625	1'14.884
2'39.694	0'41.069

Ideal Best Lap	
0'42.754	0'42.754
1'56.490	1'13.736
2'36.906	0'40.416



On September, 5 - 6
Circuit de SPA

LAP ANALYSIS Qualifying - 1

Number	49			51			53			55			59			62		
	Lap Time	Partial	Speed	Lap Time	Partial	Speed	Lap Time	Partial	Speed	Lap Time	Partial	Speed	Lap Time	Partial	Speed	Lap Time	Partial	Speed
1 ^a - 1	0'45.881	0'45.881	203.774	0'43.700	0'43.700	231.760	0'45.696	0'45.696	185.568	0'46.463	0'46.463	193.896	0'45.445	0'45.445	217.742	0'45.257	0'45.257	187.501
1 ^a - 2	2'10.817	1'24.936		1'58.737	1'15.037		2'03.650	1'17.954		2'06.743	1'20.280		1'59.471	1'14.026		2'03.300	1'18.043	
1 ^a - 3	2'55.812	0'44.995		2'40.081	0'41.344		2'46.865	0'43.215		2'53.059	0'46.316		2'40.489	0'41.018		2'45.984	0'42.684	
2 ^a - 1	0'46.028	0'46.028	202.627	0'43.319	0'43.319	217.743	0'44.747	0'44.747	211.351	0'47.771	0'47.771	218.624	0'43.569	0'43.569	223.141	0'47.213	0'47.213	184.616
2 ^a - 2	2'06.040	1'20.012		1'57.616	1'14.297		2'02.290	1'17.543		2'06.447	1'18.676		1'57.305	1'13.736		2'04.000	1'16.787	
2 ^a - 3	2'51.756	0'45.716		2'38.709	0'41.093		2'45.155	0'42.865		2'50.985	0'44.538		2'37.763	0'40.458		2'46.544	0'42.544	
3 ^a - 1	0'46.144	0'46.144	182.433	0'43.445	0'43.445	221.312	0'45.066	0'45.066	206.897	0'45.523	0'45.523	194.946	0'43.378	0'43.378	226.416	0'44.331	0'44.331	196.364
3 ^a - 2	2'06.569	1'20.425		2'00.598	1'17.153		2'02.128	1'17.062		2'03.780	1'18.257		1'57.365	1'13.987		2'01.095	1'16.764	
3 ^a - 3	2'51.124	0'44.555		2'54.425	0'53.827	PIT	2'44.560	0'42.432		2'47.929	0'44.149		2'38.218	0'40.853		2'43.130	0'42.035	
4 ^a - 1	0'45.380	0'45.380	208.495	2'32.975	2'32.975	199.631	0'44.562	0'44.562	200.744	0'45.487	0'45.487	205.715	0'43.140	0'43.140	213.018	0'46.381	0'46.381	169.812
4 ^a - 2	2'04.999	1'19.619		3'49.184	1'16.209		2'00.745	1'16.183		2'04.641	1'19.154		1'58.267	1'15.127		2'06.761	1'20.380	
4 ^a - 3	2'48.956	0'43.957		4'30.591	0'41.407		2'43.744	0'42.999		2'49.009	0'44.368		2'47.552	0'49.285		3'01.677	0'54.916	PIT
5 ^a - 1	0'45.148	0'45.148	200.372	0'43.047	0'43.047	226.891	0'45.295	0'45.295	185.887	0'45.484	0'45.484	194.245	7'21.214	7'21.214	204.934	3'27.943	3'27.943	176.760
5 ^a - 2	2'04.050	1'18.902		1'57.188	1'14.141		2'03.912	1'18.617		2'06.807	1'21.323		8'43.278	1'22.064		4'45.641	1'17.698	
5 ^a - 3	2'46.939	0'42.889		2'38.177	0'40.989		2'49.752	0'45.840		3'01.994	0'55.187	PIT	9'24.088	0'40.804		5'29.069	0'43.428	
6 ^a - 1	0'44.974	0'44.974	200.372	0'43.354	0'43.354	231.264	0'44.869	0'44.869	200.001	4'39.542	4'39.542	192.171	0'42.958	0'42.958	233.767	0'44.101	0'44.101	212.181
6 ^a - 2	2'03.672	1'18.698		1'57.926	1'14.572		2'01.115	1'16.246		5'58.987	1'19.445		1'56.896	1'13.938				
6 ^a - 3	2'46.338	0'42.666		2'43.606	0'45.680		2'42.973	0'41.858		6'42.904	0'43.917		2'37.538	0'40.642		2'57.277	2'57.277	
7 ^a - 1	0'45.048	0'45.048	202.248	0'43.182	0'43.182	220.859	0'44.196	0'44.196	208.495	0'45.328	0'45.328	194.245	0'43.356	0'43.356	219.513	0'43.842	0'43.842	206.897
7 ^a - 2	2'03.048	1'18.000		1'57.276	1'14.094		2'00.101	1'15.905		2'05.714	1'20.386		1'57.920	1'14.564		2'05.187	1'21.345	
7 ^a - 3	2'45.294	0'42.246		2'38.028	0'40.752		2'42.397	0'42.296		2'50.329	0'44.615		2'38.336	0'40.416		2'47.695	0'42.508	
8 ^a - 1	0'45.056	0'45.056	204.934				0'44.529	0'44.529	208.495	0'45.131	0'45.131	195.653	0'42.822	0'42.822	228.330	0'43.804	0'43.804	207.294
8 ^a - 2	2'02.790	1'17.734					2'00.191	1'15.662		2'03.353	1'18.222		1'57.700	1'14.880		1'59.961	1'16.157	
8 ^a - 3	2'46.244	0'43.454					2'41.829	0'41.638		2'46.441	0'43.088		2'44.000	0'46.298		2'41.277	0'41.316	
9 ^a - 1	0'44.308	0'44.308	207.693				0'44.593	0'44.593	216.001									
9 ^a - 2	2'01.438	1'17.130					2'00.692	1'16.099										
9 ^a - 3	2'44.090	0'42.652					2'42.837	0'42.145										
10 ^a - 1							0'44.571	0'44.571	217.304									
10 ^a - 2							2'00.763	1'16.192										
10 ^a - 3							2'44.242	0'43.479										

Ideal Lap	
0'44.308	0'44.308
2'01.438	1'17.130
2'43.684	0'42.246

Ideal Lap	
0'43.047	0'43.047
1'57.141	1'14.094
2'37.893	0'40.752

Ideal Lap	
0'44.196	0'44.196
1'59.858	1'15.662
2'41.496	0'41.638

Ideal Lap	
0'45.131	0'45.131
2'03.353	1'18.222
2'46.441	0'43.088

Ideal Lap	
0'42.822	0'42.822
1'56.558	1'13.736
2'36.974	0'40.416

Ideal Lap	
0'43.804	0'43.804
1'59.961	1'16.157
2'41.277	0'41.316

Ideal Best Lap	
0'42.754	0'42.754
1'56.490	1'13.736
2'36.906	0'40.416



LAP ANALYSIS Qualifying - 1

On September, 5 - 6
Circuit de SPA

Number	90		
Lap	Lap Time	Partial	Speed
1ª - 1	0'46.927	0'46.927	164.886
1ª - 2	2'04.746	1'17.819	
1ª - 3	2'48.072	0'43.326	
2ª - 1	0'44.450	0'44.450	228.814
2ª - 2	1'59.941	1'15.491	
2ª - 3	2'42.410	0'42.469	
3ª - 1	0'44.123	0'44.123	217.304
3ª - 2	1'59.355	1'15.232	
3ª - 3	2'41.301	0'41.946	
4ª - 1	0'44.126	0'44.126	209.303
4ª - 2	1'59.408	1'15.282	
4ª - 3	2'41.285	0'41.877	
5ª - 1	0'49.684	0'49.684	161.435
5ª - 2	2'10.317	1'20.633	
5ª - 3	2'54.868	0'44.551	
6ª - 1	0'44.112	0'44.112	208.093
6ª - 2	1'58.899	1'14.787	
6ª - 3	2'40.236	0'41.337	
7ª - 1	0'44.082	0'44.082	210.938
7ª - 2	1'59.735	1'15.653	
7ª - 3	2'52.623	0'52.888	PIT
8ª - 1	2'03.921	2'03.921	180.001
8ª - 2	3'21.592	1'17.671	
8ª - 3	4'03.873	0'42.281	
9ª - 1	0'43.710	0'43.710	215.569
9ª - 2	1'58.893	1'15.183	
9ª - 3	2'40.387	0'41.494	
10ª - 1	0'43.818	0'43.818	214.286
10ª - 2	1'58.535	1'14.717	
10ª - 3	2'40.162	0'41.627	

Ideal Lap	
0'43.710	0'43.710
1'58.427	1'14.717
2'39.764	0'41.337

Ideal Best Lap	
0'42.754	0'42.754
1'56.490	1'13.736
2'36.906	0'40.416





Circuit de SPA

On September, 5 - 6

Qualifying - 1 Sectors Results

Sector - 1			Sector - 2			Sector - 3			Ideal Lap vs Best Lap			
Ord.	Nº Driver	Time	Nº Driver	Time	Nº Driver	Time	Ord.	Nº Driver	Ideal Lap	Best Lap	Ord.	
1	3 Alessandro Balzan	42.754	59 Rob Bell	1'13.736	59 Rob Bell	40.416	1	59 Rob Bell	2'36.974	2'37.538	1	
2	59 Rob Bell	42.822	51 Michele Rugolo	1'14.094	2 Miguel Ramos	40.684	2	51 Michele Rugolo	2'37.893	2'38.028	2	
3	51 Michele Rugolo	43.047	8 Michael Schmetz	1'14.181	51 Michele Rugolo	40.752	3	8 Michael Schmetz	2'38.212	2'38.858	4	
4	8 Michael Schmetz	43.051	2 Miguel Ramos	1'14.464	8 Michael Schmetz	40.980	4	2 Miguel Ramos	2'38.333	2'38.394	3	
5	10 Evan Hankey	43.087	90 Ezequiel Pérez Companc	1'14.717	10 Evan Hankey	41.026	5	3 Alessandro Balzan	2'38.901	2'39.378	6	
6	2 Miguel Ramos	43.185	16 Matias Russo	1'14.884	16 Matias Russo	41.069	6	10 Evan Hankey	2'39.031	2'39.031	5	
7	90 Ezequiel Pérez Companc	43.710	10 Evan Hankey	1'14.918	3 Alessandro Balzan	41.192	7	16 Matias Russo	2'39.694	2'39.740	7	
8	16 Matias Russo	43.741	3 Alessandro Balzan	1'14.955	62 James Abbott	41.316	8	90 Ezequiel Pérez Companc	2'39.764	2'40.162	8	
9	62 James Abbott	43.804	53 Filipe Barreiros	1'15.662	90 Ezequiel Pérez Companc	41.337	9	62 James Abbott	2'41.277	2'41.277	9	
10	53 Filipe Barreiros	44.196	62 James Abbott	1'16.157	53 Filipe Barreiros	41.638	10	53 Filipe Barreiros	2'41.496	2'41.829	10	
11	9 Jürgen Alzen	44.307	9 Jürgen Alzen	1'16.782	49 Howard Blank	42.246	11	9 Jürgen Alzen	2'43.410	2'44.003	11	
12	49 Howard Blank	44.308	49 Howard Blank	1'17.130	9 Jürgen Alzen	42.321	12	49 Howard Blank	2'43.684	2'44.090	12	
13	55 Claudio Sdanewitsch	45.131	55 Claudio Sdanewitsch	1'18.222	55 Claudio Sdanewitsch	43.088	13	55 Claudio Sdanewitsch	2'46.441	2'46.441	13	



Santísima Trinidad 30 28010 MADRID

Tel y Fax 91.448.32.06

www.cronococa.com

e-mail: info@cronococa.com



Juan Bravo 17 28006 MADRID

Tel 91.432.27.50

www.gt sport.es

e-mail: info@gt sport.es



Circuit de SPA
On September, 5 - 6

Qualifying - 1 MAXIMUM SPEED

Ord.	Nº	Entrant	Nat.	Driver	Nat.	St.	Driver 2	Nat.	St.	Vehicle	Cat.	Cla.	Km/h
1	10	TF Sport	GBR	Evan Hankey	GBR	Silver	Salih Yoluc	TUR	Bronze	Aston Martin Vantage	GA	1º	244.344
2	3	S. Villorba Corse	ITA	Alessandro Balzan	ITA	Gold	Nicola Benucci	ITA	Bronze	Ferrari 458 Italia	GP	1º	241.072
3	59	Teo Martin M.	ESP	Rob Bell	GBR	Platinum	Andrew Watson	GBR	Silver	McLaren 650S	GP	2º	233.767
4	8	Aston Martin Brussels R.	BEL	Tim Verbergt	BEL	Gold	Michael Schmetz	BEL	Bronze	Aston Martin Vantage	GP	3º	232.759
5	51	AF Corse	ITA	Pasin Lathouras	THA	Silver	Michele Rugolo	ITA	Gold	Ferrari 458 Italia	GP	4º	231.760
6	90	AF Corse	ITA	Ezequiel Pérez Companc	ARG	Bronze	Raffaele Giammaria	ITA	Gold	Ferrari 458 Italia	GP	5º	228.814
7	9	H&R Spezialfedern GmbH & Co.KG	DEU	Jürgen Alzen	DEU	Bronze				Ford GT	GA	2º	223.141
8	16	AERT	ESP	Anton Nebylitskiy	RUS	Silver	Matias Russo	ARG	Gold	Lamborghini Gallardo	GP	6º	222.681
9	2	Teo Martin M.	ESP	Miguel Ramos	PRT	Silver	Álvaro Parente	PRT	Platinum	McLaren 650S	GP	7º	220.409
10	55	AF Corse	ITA	Claudio Sdanewitsch	DEU	Bronze	Stéphane Lémeret	BEL	Bronze	Ferrari 458 Italia	GA	3º	218.624
11	53	AF Corse	ITA	Filipe Barreiros	PRT	Bronze				Ferrari 458 Italia	GA	4º	217.304
12	62	Radical Sportscars	GBR	James Abbott	GBR	Bronze				Radical RXC V8	CA	1º	212.181
13	49	AF Corse	ITA	Yannick Mallegol	FRA	Bronze	Howard Blank	ITA	Bronze	Ferrari 458 Italia	GA	5º	208.495



Santísima Trinidad 30 28010 MADRID
Tel y Fax 91.448.32.06
www.cronococa.com
e-mail:info@cronococa.com



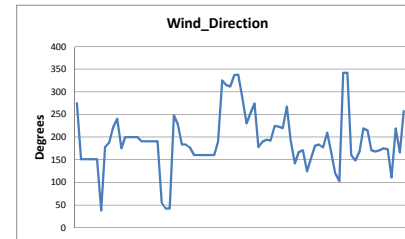
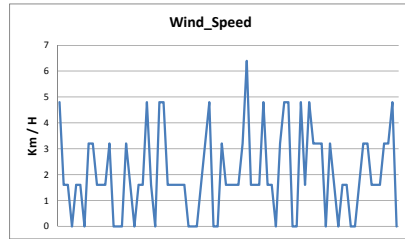
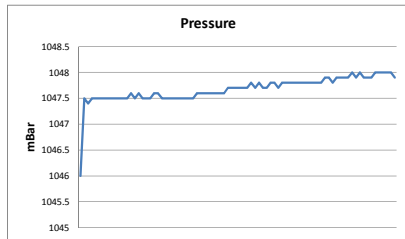
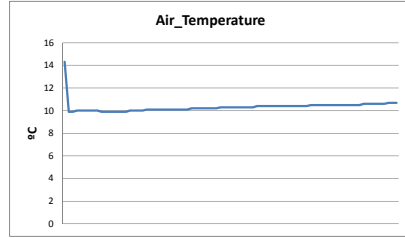
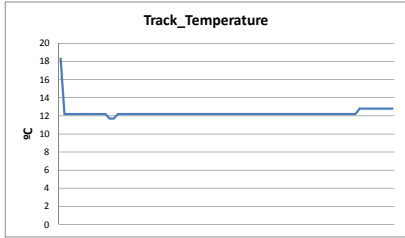
Juan Bravo 17 28006 MADRID
Tel 91.432.27.50
www.gtssport.es
e-mail: info@gtssport.es



WEATHER REPORT Qualifying - 1

Circuit de SPA
On September, 5 - 6

Track Status **WET**



COCA
Santísima Trinidad 30 28010 MADRID
Tel y Fax 91 448.32.06
www.cronococa.com
e-mail: info@cronococa.com

GTSPORT
Juan Bravo 17 28006 MADRID
Tel 91 432.27.50
www.gtssport.es
e-mail: info@gtssport.es

Orden	Track_Temp	Air_Tempera	Humidity	Pressure	Wind_Speed	Wind_Direction
9555	18.3	14.3	67	1046	4.8	275
9556	12.2	9.9	95	1047.5	1.6	151
9557	12.2	9.9	95	1047.4	1.6	151
9558	12.2	10	95	1047.5		151
9559	12.2	10	95	1047.5	1.6	151
9560	12.2	10	95	1047.5	1.6	151
9561	12.2	10	95	1047.5		38
9562	12.2	10	95	1047.5	3.2	178
9563	12.2	10	95	1047.5	3.2	188
9564	12.2	9.9	95	1047.5	1.6	221
9565	12.2	9.9	95	1047.5	1.6	240
9566	12.2	9.9	95	1047.5	1.6	175
9567	11.7	9.9	95	1047.5	3.2	200
9568	11.7	9.9	95	1047.6		200
9569	12.2	9.9	95	1047.5		200
9570	12.2	9.9	95	1047.6		200
9571	12.2	10	95	1047.5	3.2	191
9572	12.2	10	95	1047.5	1.6	191
9573	12.2	10	95	1047.5		191
9574	12.2	10	95	1047.6	1.6	191
9575	12.2	10.1	95	1047.6	1.6	191
9576	12.2	10.1	95	1047.5	4.8	55
9577	12.2	10.1	95	1047.5	1.6	42
9578	12.2	10.1	95	1047.5		42
9579	12.2	10.1	95	1047.5	4.8	248
9580	12.2	10.1	95	1047.5	4.8	229
9581	12.2	10.1	95	1047.5	1.6	184
9582	12.2	10.1	95	1047.5	1.6	184
9583	12.2	10.1	95	1047.5	1.6	177
9584	12.2	10.1	95	1047.5	1.6	160
9585	12.2	10.1	95	1047.6	1.6	160
9586	12.2	10.2	95	1047.6		160
9587	12.2	10.2	95	1047.6		160
9588	12.2	10.2	95	1047.6		160
9589	12.2	10.2	95	1047.6	1.6	160
9590	12.2	10.2	95	1047.6	3.2	190
9591	12.2	10.2	95	1047.6	4.8	325
9592	12.2	10.2	95	1047.6		315
9593	12.2	10.3	95	1047.7		312
9594	12.2	10.3	95	1047.7	3.2	337
9595	12.2	10.3	95	1047.7	1.6	330
9596	12.2	10.3	95	1047.7	1.6	296
9597	12.2	10.3	95	1047.7	1.6	294
9598	12.2	10.3	95	1047.7	1.6	252
9599	12.2	10.3	95	1047.8	3.2	274
9600	12.2	10.3	95	1047.7	6.4	178
9601	12.2	10.3	95	1047.8	1.6	190
9602	12.2	10.4	95	1047.7	1.6	194
9603	12.2	10.4	95	1047.7	1.6	192
9604	12.2	10.4	95	1047.8	4.8	225
9605	12.2	10.4	95	1047.8	1.6	223
9606	12.2	10.4	95	1047.7	1.6	220
9607	12.2	10.4	95	1047.8		267
9608	12.2	10.4	95	1047.8	3.2	192
9609	12.2	10.4	95	1047.8	4.8	142
9610	12.2	10.4	95	1047.8	4.8	167
9611	12.2	10.4	95	1047.8		171
9612	12.2	10.4	95	1047.8		124
9613	12.2	10.4	95	1047.8	4.8	152
9614	12.2	10.4	95	1047.8	1.6	181
9615	12.2	10.5	95	1047.8	4.8	184
9616	12.2	10.5	95	1047.8	3.2	177
9617	12.2	10.5	95	1047.8	3.2	210
9618	12.2	10.5	95	1047.9	3.2	168
9619	12.2	10.5	95	1047.9		120
9620	12.2	10.5	95	1047.8	3.2	103
9621	12.2	10.5	95	1047.9	1.6	342
9622	12.2	10.5	95	1047.9		342
9623	12.2	10.5	95	1047.9	1.6	160
9624	12.2	10.5	95	1047.9	1.6	148
9625	12.2	10.5	95	1048		168
9626	12.2	10.5	95	1047.9		219
9627	12.2	10.5	95	1048	1.6	215
9628	12.8	10.6	95	1047.9	3.2	171
9629	12.8	10.6	95	1047.9	3.2	168
9630	12.8	10.6	95	1047.9	1.6	171
9631	12.8	10.6	95	1048	1.6	175
9632	12.8	10.6	95	1048	1.6	173
9633	12.8	10.6	95	1048	3.2	111
9634	12.8	10.7	95	1048	3.2	219
9635	12.8	10.7	95	1048	4.8	166
9636	12.8	10.7	95	1047.9		257