

**Free practice 2 RESULTS**

Ord.	Nº	Entrant	Nat.	Driver	Nat.	St.	Driver 2	Nat.	St.	Vehicle	Cat.	Cl.	Laps	Best	Time	Gap	Interval	Km/h
1	51	AF Corse	ITA	Pasin Lathouras	THA	Silver	Michele Rugolo	ITA	Gold	Ferrari 458 Italia	GP	1º	11	4	2'00.275			173.393
2	5	Drivex School	ESP	Beniamino Caccia	ITA	Bronze	Lorenzo Bontempelli	ITA	Silver	Audi R8 LMS Ultra	GP	2º	22	21	2'00.606	0"331	0"331	172.917
3	49	AF Corse	ITA	Yannick Mallegol	FRA	Bronze	Howard Blank	ITA	Bronze	Ferrari 458 Italia	GA	1º	23	22	2'01.227	0"952	0"621	172.031
4	3	S. Villorba Corse	ITA	Alessandro Balzan	ITA	Gold	Nicola Benucci	ITA	Bronze	Ferrari 458 Italia	GP	3º	25	23	2'01.525	1"250	0"298	171.609
5	55	AF Corse	ITA	Claudio Sdanewitsch	DEU	Bronze	Ilya Melnikov	RUS	Bronze	Ferrari 458 Italia	GA	2º	25	24	2'01.596	1"321	0"071	171.509
6	90	AF Corse	ITA	Ezequiel Pérez Companc	ARG	Bronze	Raffaele Giammaria	ITA	Gold	Ferrari 458 Italia	GP	4º	21	11	2'01.604	1"329	0"008	171.498
7	2	Teo Martin M.	ESP	Miguel Ramos	PRT	Silver	Álvaro Parente	PRT	Platinum	McLaren 650S	GP	5º	13	10	2'01.986	1"711	0"382	170.961
8	22	Balfe Motorsport	GBR	Shaun Balfe	GBR	Bronze	Phil Keen	GBR	Silver	Ferrari 458 Italia	GP	6º	24	23	2'02.542	2"267	0"556	170.185
9	52	AF Corse	ITA	Duncan Cameron	GBR	Bronze	Matt Griffin	IRL	Gold	Ferrari 458 Italia	GP	7º	22	21	2'02.579	2"304	0"037	170.134
10	25	MP1 Corse	ITA	Valentino Fornaroli	ITA	Bronze				Ferrari 458 Italia	GP	8º	26	25	2'02.854	2"579	0"275	169.753
11	12	Solaris Motorsport	ITA	Francesco Sini	ITA	Gold	Marcello Puglisi	ITA	Bronze	Chevrolet Corvette	GP	9º	23	21	2'03.504	3"229	0"650	168.859
12	53	AF Corse	ITA	Filipe Barreiros	PRT	Bronze	Francisco Guedes	PRT	Bronze	Ferrari 458 Italia	GA	3º	25	24	2'03.660	3"385	0"156	168.646
13	62	Radical Sportscars	GBR	James Abbott	GBR	Bronze				Radical RXC V8	CA	1º	16	11	2'06.844	6"569	3"184	164.413
14	10	TF Sport	GBR	Euan Hankey	GBR	Silver	Salih Yoluc	TUR	Bronze	Aston Martin Vantage	GP	10º	24	20	2'06.958	6"683	0"114	164.265

Autodromo di Monza on October 02, 2015

At 17:25

RACE DIRECTOR

TIMEKEEPER



Santisima Trinidad 30 28010 MADRID  
Tel y Fax 91.448.32.06  
www.cronococa.com  
e-mail:info@cronococa.com




Juan Bravo 17 28006 MADRID  
Tel 91.432.27.50  
www.gtssport.es  
e-mail: info@gtssport.es

LAP ANALYSIS Free practice 2

On October 03 - 04  
Autodromo di Monza

Number	2			3			5			10			12			22		
Lap	Lap Time	Partial	Speed	Lap Time	Partial	Speed	Lap Time	Partial	Speed	Lap Time	Partial	Speed	Lap Time	Partial	Speed	Lap Time	Partial	Speed
1 <sup>a</sup> - 1	0'40.482	0'40.482	202.627	0'38.890	0'38.890	224.533	0'41.309	0'41.309	190.813	0'57.401	0'57.401	133.995	0'39.661	0'39.661	201.118	0'40.749	0'40.749	162.896
1 <sup>a</sup> - 2	1'25.407	0'44.925		1'22.947	0'44.057		1'26.242	0'44.933		1'56.254	0'58.853		1'24.392	0'44.731		1'25.026	0'44.277	
1 <sup>a</sup> - 3	2'10.155	0'44.748		2'10.242	0'47.295		2'11.297	0'45.055		2'50.688	0'54.434		2'09.164	0'44.772		2'08.846	0'43.820	
2 <sup>a</sup> - 1	0'40.400	0'40.400	217.742	0'38.518	0'38.518	258.374	0'39.048	0'39.048	217.742	0'44.111	0'44.111	196.008	0'38.705	0'38.705	223.141	0'38.037	0'38.037	228.330
2 <sup>a</sup> - 2	1'23.866	0'43.466		1'22.157	0'43.639		1'22.624	0'43.576		1'38.264	0'54.153		1'22.632	0'43.927		1'21.861	0'43.824	
2 <sup>a</sup> - 3	2'07.384	0'43.518		2'05.732	0'43.575		2'06.704	0'44.080		2'27.351	0'49.087		2'06.761	0'44.129		2'05.259	0'43.398	
3 <sup>a</sup> - 1	0'37.999	0'37.999	240.535	0'37.914	0'37.914	246.576	0'39.036	0'39.036	230.278	0'42.599	0'42.599	185.887	0'38.508	0'38.508	219.960	0'46.107	0'46.107	170.079
3 <sup>a</sup> - 2	1'21.290	0'43.291		1'24.060	0'46.146		1'22.364	0'43.328		1'31.750	0'49.151		1'22.542	0'44.034		1'30.772	0'44.665	
3 <sup>a</sup> - 3	2'03.861	0'42.571		2'08.279	0'44.219		2'06.334	0'43.970		2'18.689	0'46.939		2'07.146	0'44.604		2'14.458	0'43.686	
4 <sup>a</sup> - 1	0'42.283	0'42.283	263.415	0'38.359	0'38.359	251.749	0'39.640	0'39.640	229.300	0'40.620	0'40.620	208.093	0'39.630	0'39.630	191.151	0'37.613	0'37.613	241.072
4 <sup>a</sup> - 2	1'25.517	0'43.234		1'21.912	0'43.553		1'26.820	0'47.180		1'26.654	0'46.034		1'23.933	0'44.303		1'20.808	0'43.195	
4 <sup>a</sup> - 3	2'08.369	0'42.852		2'05.290	0'43.378		2'18.872	0'52.052	PIT	2'13.009	0'46.355		2'17.593	0'53.660	PIT	2'03.921	0'43.113	
5 <sup>a</sup> - 1	0'40.842	0'40.842	243.244	0'38.205	0'38.205	248.848	4'07.121	4'07.121	146.541	0'39.949	0'39.949	210.527	3'01.044	3'01.044	180.301	0'37.967	0'37.967	235.295
5 <sup>a</sup> - 2	1'27.585	0'46.743		1'21.963	0'43.758		4'52.276	0'45.155		1'25.389	0'45.440		3'44.877	0'43.833		1'21.427	0'43.460	
5 <sup>a</sup> - 3	2'17.534	0'49.949	PIT	2'13.675	0'51.712	PIT	5'39.152	0'46.876		2'11.196	0'45.807		4'28.824	0'43.947		2'04.558	0'43.131	
6 <sup>a</sup> - 1	3'31.342	3'31.342	177.050	8'18.716	8'18.716	206.501	0'40.042	0'40.042	221.312	0'41.654	0'41.654	188.154	0'38.500	0'38.500	215.140	0'38.000	0'38.000	228.330
6 <sup>a</sup> - 2	4'15.423	0'44.081		9'01.695	0'42.979		1'31.293	0'51.251		1'32.035	0'50.381		1'22.735	0'44.235		1'21.510	0'45.510	
6 <sup>a</sup> - 3	5'00.188	0'44.765		9'44.922	0'43.227		2'15.259	0'43.966		2'33.497	1'01.462	PIT	2'06.811	0'44.076		2'17.089	0'55.579	PIT
7 <sup>a</sup> - 1	0'38.076	0'38.076	262.136	0'37.829	0'37.829	260.870	0'39.159	0'39.159	221.312	3'03.374	3'03.374	183.987	0'38.346	0'38.346	227.849	3'26.474	3'26.474	210.117
7 <sup>a</sup> - 2	1'21.858	0'43.782		1'21.327	0'43.498		1'22.604	0'43.345		3'49.519	0'46.145		1'21.981	0'43.635		4'16.140	0'49.666	
7 <sup>a</sup> - 3	2'16.013	0'54.155	PIT	2'04.444	0'43.117		2'06.293	0'43.789		4'35.164	0'45.645		2'05.880	0'43.899		5'09.427	0'53.287	PIT
8 <sup>a</sup> - 1	15'33.886	15'33.886	136.537	0'37.830	0'37.830	257.143	0'38.794	0'38.794	225.000	0'39.767	0'39.767	220.859	0'38.493	0'38.493	217.742	1'11.616	1'11.616	203.008
8 <sup>a</sup> - 2	16'18.145	0'44.259		1'20.865	0'43.035		1'21.847	0'43.053		1'25.158	0'45.391		1'23.419	0'44.926		1'54.786	0'43.170	
8 <sup>a</sup> - 3	1'19.195	0'43.050		2'04.046	0'43.181		2'05.205	0'43.358		2'11.025	0'45.867		2'19.831	0'56.412	PIT	2'37.863	0'43.077	
9 <sup>a</sup> - 1	0'37.476	0'37.476	257.143	0'37.812	0'37.812	254.717	0'37.926	0'37.926	224.533	0'39.312	0'39.312	227.849	4'56.088	4'56.088	150.000	0'40.353	0'40.353	246.576
9 <sup>a</sup> - 2	1'19.657	0'42.181		1'20.399	0'42.587		1'22.780	0'44.854		1'25.008	0'45.696		5'46.743	0'50.655		1'23.401	0'43.048	
9 <sup>a</sup> - 3	2'01.986	0'42.329		2'03.484	0'43.085		2'16.748	0'53.968	PIT	2'10.014	0'45.006		6'47.315	1'00.572	PIT	2'06.515	0'43.114	
10 <sup>a</sup> - 1	0'45.503	0'45.503	213.862	0'37.854	0'37.854	252.337	7'22.306	7'22.306	178.808	0'39.034	0'39.034	232.759	3'15.791	3'15.791	142.858	0'37.828	0'37.828	238.938
10 <sup>a</sup> - 2	1'38.940	0'53.437		1'20.441	0'42.587		8'07.975	0'45.669		1'23.461	0'44.427		4'02.185	0'46.394		1'20.981	0'43.153	
10 <sup>a</sup> - 3	2'24.304	0'45.364		2'09.981	0'49.540	PIT	8'52.998	0'45.023		2'08.917	0'45.456		4'47.446	0'45.261		2'09.746	0'48.765	PIT
11 <sup>a</sup> - 1	0'37.637	0'37.637	260.241	4'13.970	4'13.970	186.207	0'38.403	0'38.403	238.938	0'39.180	0'39.180	221.766	0'40.385	0'40.385	194.946	3'57.580	3'57.580	144.579
11 <sup>a</sup> - 2	1'34.467	0'42.202		4'57.852	0'43.882		1'21.752	0'43.349		1'28.534	0'49.354		1'24.093	0'43.708		4'44.458	0'46.878	
11 <sup>a</sup> - 3	2'02.268	0'42.429		5'41.474	0'43.622		2'05.517	0'43.765		2'16.722	0'48.188		2'08.401	0'44.308		5'29.890	0'45.432	
12 <sup>a</sup> - 1	0'44.830	0'44.830	245.455	0'38.612	0'38.612	242.697	0'38.210	0'38.210	240.535	0'41.624	0'41.624	190.813	0'39.768	0'39.768	200.372	0'39.613	0'39.613	218.624
12 <sup>a</sup> - 2	1'34.467	0'49.637		1'21.739	0'43.127		1'21.323	0'43.113		1'26.476	0'44.852		1'23.391	0'43.623		1'23.677	0'44.064	
12 <sup>a</sup> - 3	2'34.317	0'59.850	PIT	2'04.911	0'43.172		2'04.749	0'43.426		2'14.590	0'48.114		2'08.217	0'44.826		2'07.790	0'44.113	
13 <sup>a</sup> - 1				0'37.860	0'37.860	252.337	0'38.240	0'38.240	250.001	0'39.503	0'39.503	232.259	0'47.923	0'47.923	195.653	0'39.086	0'39.086	226.416
13 <sup>a</sup> - 2				1'21.395	0'43.535		1'21.560	0'43.320		1'24.063	0'44.560		1'32.381	0'44.458		1'22.821	0'43.735	
13 <sup>a</sup> - 3				2'04.946	0'43.551		2'05.080	0'43.520		2'08.767	0'44.704		2'24.290	0'51.909	PIT	2'06.636	0'43.815	
14 <sup>a</sup> - 1				0'38.166	0'38.166	249.423	0'38.344	0'38.344	251.163	0'39.185	0'39.185	232.259	2'51.006	2'51.006	164.384	0'38.731	0'38.731	230.770
14 <sup>a</sup> - 2				1'21.023	0'42.857		1'21.508	0'43.164		1'23.439	0'44.254		3'33.602	0'42.596		1'21.728	0'42.997	
14 <sup>a</sup> - 3				2'04.457	0'43.434		2'04.704	0'43.196		2'08.887	0'45.448		4'17.643	0'44.041		2'05.503	0'43.775	
15 <sup>a</sup> - 1				0'38.043	0'38.043	253.522	0'38.236	0'38.236	252.337	0'48.070	0'48.070	235.808	0'38.651	0'38.651	217.742	0'38.630	0'38.630	226.416
15 <sup>a</sup> - 2				1'21.113	0'43.070		1'21.305	0'43.069		1'32.528	0'44.458		1'20.954	0'42.303		1'21.480	0'42.850	
15 <sup>a</sup> - 3				2'04.429	0'43.316		2'04.340	0'43.035		2'26.610	0'54.082	PIT	2'05.285	0'44.331		2'04.983	0'43.503	
16 <sup>a</sup> - 1				0'38.293	0'38.293	244.898	0'38.135	0'38.135	249.423	3'03.363	3'03.363	129.342	0'38.616	0'38.616	210.527	0'41.379	0'41.379	224.533
16 <sup>a</sup> - 2				1'21.433	0'43.140		1'20.821	0'42.686		3'49.368	0'46.005		1'20.934	0'42.318		1'27.884	0'46.505	
16 <sup>a</sup> - 3				2'04.369	0'42.936		2'03.779	0'42.958		4'44.938	0'55.570	PIT	2'04.805	0'43.871		2'12.136	0'44.252	
17 <sup>a</sup> - 1				0'37.840	0'37.840	252.337	0'38.819	0'38.819	247.140	4'02.178	4'02.178	161.677	0'38.197	0'38.197	225.942	0'38.515	0'38.515	236.843
17 <sup>a</sup> - 2				1'20.117	0'42.277		1'22.210	0'43.391		4'46.239	0'44.061		1'20.814	0'42.617		1'21.249	0'42.734	
17 <sup>a</sup> - 3				2'03.079	0'42.962		2'13.953	0'51.743	PIT	5'31.492	0'45.253		2'11.096	0'50.282	PIT	2'04.563	0'43.314	
18 <sup>a</sup> - 1				0'38.242	0'38.242	250.581	2'18.473	2'18.473	184.301	0'39.266	0'39.266	230.278	2'29.824	2'29.824	186.207	0'40.701	0'40.701	231.264
18 <sup>a</sup> - 2				1'20.221	0'41.979		3'01.448	0'42.975		1'22.547	0'43.281		3'12.180	0'42.356		1'24.162	0'43.461	
18 <sup>a</sup> - 3				2'03.485	0'43.264		3'44.175	0'42.727		2'07.252	0'44.705		3'55.657	0'43.477		2'07.647	0'43.485	
19 <sup>a</sup> - 1				0'37.592	0'37.592	259.616	0'38.218	0'38.218	234.783	0'39.338	0'39.338	238.938	0'38.277	0'38.277	223.603	0'43.018	0'43.018	208.495
19 <sup>a</sup> - 2				1'20.510	0'42.918		1'19.226	0'41.008		1'22.443	0'43.105		1'20.243	0'41.966		1'28.874	0'45.856	
19<																		

LAP ANALYSIS Free practice 2

On October 03 - 04  
Autodromo di Monza

Number	2			3			5			10			12			22		
Lap	Lap Time	Partial	Speed	Lap Time	Partial	Speed	Lap Time	Partial	Speed	Lap Time	Partial	Speed	Lap Time	Partial	Speed	Lap Time	Partial	Speed
<b>Ideal Lap</b>			<b>Ideal Lap</b>			<b>Ideal Lap</b>			<b>Ideal Lap</b>			<b>Ideal Lap</b>			<b>Ideal Lap</b>			
	0'37.476	0'37.476		0'37.592	0'37.592		0'37.902	0'37.902		0'39.034	0'39.034		0'38.197	0'38.197		0'37.613	0'37.613	
	1'19.657	0'42.181		1'18.916	0'41.324		1'18.610	0'40.708		1'22.139	0'43.105		1'19.859	0'41.662		1'19.137	0'41.524	
	2'01.986	0'42.329		2'01.333	0'42.417		2'00.560	0'41.950		2'06.654	0'44.515		2'02.988	0'43.129		2'01.856	0'42.719	
<b>Ideal Best Lap</b>																		
	0'36.569	0'36.569																
	1'17.201	0'40.632																
	1'58.972	0'41.771																



LAP ANALYSIS Free practice 2

On October 03 - 04  
Autodromo di Monza

Number	25			49			51			52			53			55		
Lap	Lap Time	Partial	Speed	Lap Time	Partial	Speed	Lap Time	Partial	Speed	Lap Time	Partial	Speed	Lap Time	Partial	Speed	Lap Time	Partial	Speed
1 <sup>a</sup> - 1	0'38.453	0'38.453	220.859	0'41.722	0'41.722	209.709	0'38.798	0'38.798	240.535	0'38.433	0'38.433	237.363	0'38.686	0'38.686	199.263	0'39.078	0'39.078	194.946
1 <sup>a</sup> - 2	1'21.805	0'43.352		1'27.271	0'45.549		1'23.500	0'44.702		1'21.426	0'42.993		1'22.381	0'43.695		1'22.376	0'43.298	
1 <sup>a</sup> - 3	2'05.400	0'43.595		2'12.120	0'44.849		2'25.839	0'51.794	PIT	2'04.556	0'43.130		2'05.520	0'43.139		2'05.869	0'43.493	
2 <sup>a</sup> - 1	0'38.579	0'38.579	218.624	0'42.033	0'42.033	258.374	39'28.921	39'28.921	205.715	0'38.166	0'38.166	247.707	0'37.865	0'37.865	231.264	0'38.104	0'38.104	218.624
2 <sup>a</sup> - 2	1'21.712	0'43.133		1'29.459	0'47.426		40'10.811	0'41.890		1'21.347	0'43.181		1'20.978	0'43.113		1'21.071	0'42.967	
2 <sup>a</sup> - 3	2'04.996	0'43.284		2'25.839	0'56.380	PIT	40'58.983	0'48.172		2'04.407	0'43.060		2'04.524	0'43.546		2'04.453	0'43.382	
3 <sup>a</sup> - 1	0'38.127	0'38.127	227.369	0'45.299	0'45.299	188.482	0'37.215	0'37.215	246.576	0'38.235	0'38.235	243.793	0'38.602	0'38.602	194.946	0'38.019	0'38.019	211.765
3 <sup>a</sup> - 2	1'21.349	0'43.222		0'52.948	0'44.182		1'18.504	0'41.289		1'22.713	0'44.478		1'27.707	0'44.105		1'21.916	0'43.897	
3 <sup>a</sup> - 3	2'05.528	0'44.179		0'52.948	0'45.278		2'00.275	0'41.771		2'14.672	0'51.959	PIT	2'12.004	0'44.297		2'05.433	0'43.517	
4 <sup>a</sup> - 1	0'38.353	0'38.353	225.942	0'39.462	0'39.462	206.897	0'37.657	0'37.657	249.423	0'38.663	0'38.663	194.946	0'38.068	0'38.068	240.000	0'38.506	0'38.506	247.707
4 <sup>a</sup> - 2	1'21.806	0'43.453		1'25.840	0'46.378		1'19.011	0'41.354		1'21.255	0'42.794		1'20.618	0'42.550		1'21.754	0'43.248	
4 <sup>a</sup> - 3	2'13.846	0'52.040	PIT	2'19.851	0'54.011	PIT	2'09.707	0'50.696	PIT	2'14.672	0'51.959		2'03.801	0'43.183		2'05.192	0'43.438	
5 <sup>a</sup> - 1	0'38.041	0'38.041	170.079	0'50.437	0'50.437	185.887	2'58.037	2'58.037	209.709	0'38.461	0'38.461	242.697	0'37.595	0'37.595	237.886	0'38.791	0'38.791	225.942
5 <sup>a</sup> - 2	4'30.794	0'42.753		0'56.352	0'50.915		3'40.027	0'41.990		1'21.250	0'42.794		1'20.575	0'42.980		1'22.644	0'43.853	
5 <sup>a</sup> - 3	5'14.076	0'43.282		0'56.352	0'49.041		4'22.566	0'42.539		2'04.255	0'42.995		2'03.852	0'43.277		2'06.131	0'43.887	
6 <sup>a</sup> - 1	0'38.102	0'38.102	228.330	0'40.282	0'40.282	218.624	0'38.403	0'38.403	254.118	0'37.920	0'37.920	233.262	0'37.764	0'37.764	243.793	0'38.117	0'38.117	242.697
6 <sup>a</sup> - 2	1'20.807	0'42.705		1'25.528	0'45.246		1'22.522	0'44.119		1'20.789	0'42.869		1'20.759	0'42.995		1'21.149	0'43.032	
6 <sup>a</sup> - 3	2'03.763	0'42.956		2'10.887	0'45.359		2'04.970	0'42.448		2'03.535	0'42.746		2'04.054	0'43.295		2'04.349	0'43.200	
7 <sup>a</sup> - 1	0'37.678	0'37.678	225.942	0'39.235	0'39.235	229.300	0'37.791	0'37.791	244.898	0'39.671	0'39.671	231.760	0'37.796	0'37.796	228.814	0'37.874	0'37.874	253.522
7 <sup>a</sup> - 2	1'20.993	0'43.315		1'24.008	0'44.773		1'19.317	0'41.526		1'22.995	0'43.324		1'21.204	0'43.408		1'21.260	0'43.386	
7 <sup>a</sup> - 3	2'03.804	0'42.811		2'08.552	0'44.544		2'01.608	0'42.291		2'13.594	0'50.599	PIT	2'13.387	0'52.183	PIT	2'17.154	0'55.894	PIT
8 <sup>a</sup> - 1	0'38.015	0'38.015	228.330	0'38.720	0'38.720	220.859	0'37.813	0'37.813	244.344	0'39.999	0'39.999	208.495	0'42.000	0'42.000	182.433	0'42.742	0'42.742	142.106
8 <sup>a</sup> - 2	1'20.507	0'42.692		1'23.556	0'44.836		1'18.554	0'40.741		0'35.906	0'44.061		0'50.379	0'44.379		0'51.242	0'45.800	
8 <sup>a</sup> - 3	2'03.763	0'42.875		2'08.425	0'44.869		2'00.696	0'42.142		4'43.818	0'44.758		5'49.391	0'44.012		5'59.349	0'46.107	
9 <sup>a</sup> - 1	0'38.355	0'38.355	230.278	0'45.583	0'45.583	236.324	0'39.160	0'39.160	252.928	0'38.343	0'38.343	220.859	0'39.340	0'39.340	238.939	0'40.374	0'40.374	211.351
9 <sup>a</sup> - 2	1'20.896	0'42.541		1'29.817	0'44.234		1'24.122	0'44.962		1'23.077	0'44.734		1'23.395	0'44.055		1'25.921	0'45.547	
9 <sup>a</sup> - 3	2'11.514	0'50.618	PIT	2'14.071	0'44.254		2'11.569	0'47.447		2'07.082	0'44.005		2'08.202	0'44.807		2'11.476	0'45.555	
10 <sup>a</sup> - 1	2'56.240	2'56.240	171.157	0'38.670	0'38.670	235.808	0'41.008	0'41.008	224.067	0'38.112	0'38.112	238.938	0'38.650	0'38.650	237.886	0'39.240	0'39.240	217.304
10 <sup>a</sup> - 2	3'42.013	0'45.773		1'22.453	0'43.783		1'23.779	0'42.771		1'21.419	0'43.307		1'25.085	0'46.435		1'24.374	0'45.134	
10 <sup>a</sup> - 3	4'28.097	0'46.084		2'06.867	0'44.414		2'16.304	0'52.525	PIT	2'05.523	0'44.104		2'09.945	0'44.860		2'10.199	0'45.825	
11 <sup>a</sup> - 1	0'39.037	0'39.037	219.067	0'39.453	0'39.453	225.470	0'38.106	0'38.106		0'38.106	0'38.106	241.072	0'39.544	0'39.544	224.533	0'38.969	0'38.969	225.000
11 <sup>a</sup> - 2	1'24.148	0'45.111		1'23.618	0'44.165		1'23.522	0'43.978		1'20.876	0'42.770		1'23.522	0'43.978		1'27.498	0'48.529	
11 <sup>a</sup> - 3	2'10.662	0'46.514		2'07.932	0'44.314		2'04.530	0'43.654		2'04.530	0'43.654		2'08.092	0'44.570		2'13.446	0'45.948	
12 <sup>a</sup> - 1	0'40.842	0'40.842	194.946	0'38.616	0'38.616	210.938	0'39.162	0'39.162		0'39.162	0'39.162	243.244	0'38.902	0'38.902	213.439	0'43.103	0'43.103	243.793
12 <sup>a</sup> - 2	1'25.291	0'44.449		1'22.455	0'43.839		1'21.941	0'42.779		1'21.941	0'42.779		1'22.569	0'43.667		1'28.508	0'45.405	
12 <sup>a</sup> - 3	2'10.781	0'45.490		2'07.270	0'44.815		2'06.007	0'44.066		2'06.007	0'44.066		2'07.042	0'44.473		2'21.722	0'53.214	PIT
13 <sup>a</sup> - 1	0'38.361	0'38.361	239.468	0'39.264	0'39.264	211.765	0'38.358	0'38.358		0'38.358	0'38.358	239.468	0'40.339	0'40.339	193.203	0'41.089	0'41.089	206.501
13 <sup>a</sup> - 2	1'22.524	0'44.163		1'22.848	0'43.584		1'21.442	0'43.084		1'21.442	0'43.084		1'25.094	0'44.755		1'26.115	0'45.226	
13 <sup>a</sup> - 3	2'07.340	0'44.816		2'07.514	0'44.666		2'04.915	0'43.473		2'04.915	0'43.473		2'10.461	0'45.367		2'15.694	0'48.579	
14 <sup>a</sup> - 1	0'38.513	0'38.513	223.603	0'40.058	0'40.058	222.681	0'38.027	0'38.027		0'38.027	0'38.027	238.939	0'38.663	0'38.663	221.766	0'38.540	0'38.540	227.369
14 <sup>a</sup> - 2	1'22.225	0'43.712		1'24.267	0'44.209		1'20.632	0'42.605		1'20.632	0'42.605		1'22.460	0'43.797		1'22.677	0'44.137	
14 <sup>a</sup> - 3	2'06.274	0'44.049		2'08.737	0'44.470		2'03.707	0'43.075		2'03.707	0'43.075		2'12.943	0'50.483	PIT	2'07.466	0'44.789	
15 <sup>a</sup> - 1	0'38.026	0'38.026	221.312	0'39.141	0'39.141	225.470	0'37.803	0'37.803	244.344	0'37.803	0'37.803	244.344	0'39.953	0'39.953	189.474	0'38.414	0'38.414	229.300
15 <sup>a</sup> - 2	1'21.438	0'43.412		1'23.685	0'44.544		1'19.846	0'42.043		1'19.846	0'42.043		1'35.135	0'43.182		1'22.408	0'43.994	
15 <sup>a</sup> - 3	2'05.374	0'43.936		2'08.933	0'45.248		2'03.000	0'43.154		2'03.000	0'43.154		4'37.031	0'43.896		2'06.411	0'44.003	
16 <sup>a</sup> - 1	0'39.197	0'39.197	230.770	0'38.812	0'38.812	225.000	0'38.359	0'38.359		0'38.359	0'38.359	238.411	0'38.192	0'38.192	225.470	0'38.684	0'38.684	222.681
16 <sup>a</sup> - 2	1'22.284	0'43.087		1'22.513	0'43.701		1'20.479	0'42.120		1'20.479	0'42.120		1'21.419	0'43.227		1'25.213	0'46.529	
16 <sup>a</sup> - 3	2'06.240	0'43.956		2'14.299	0'51.786	PIT	2'04.119	0'43.640		2'04.119	0'43.640		2'05.320	0'43.901		2'09.824	0'44.611	
17 <sup>a</sup> - 1	0'38.348	0'38.348	224.533	0'40.432	0'40.432	142.858	0'45.461	0'45.461		0'45.461	0'45.461	172.249	0'37.958	0'37.958	227.849	0'41.614	0'41.614	250.001
17 <sup>a</sup> - 2	1'21.574	0'43.226		3'24.521	0'44.089		1'32.941	0'47.480		1'32.941	0'47.480		1'21.607	0'43.649		1'24.974	0'43.360	
17 <sup>a</sup> - 3	2'06.253	0'44.679		4'16.213	0'51.692	PIT	2'16.517	0'43.576		2'16.517	0'43.576		2'05.597	0'43.990		2'09.935	0'44.961	
18 <sup>a</sup> - 1	0'38.214	0'38.214	228.814	0'40.804	0'40.804	255.320	0'40.629	0'40.629		0'40.629	0'40.629	255.320	0'38.777	0'38.777	202.627	0'38.837	0'38.837	208.898
18 <sup>a</sup> - 2	1'21.147	0'42.933		2'46.267	0'43.732		1'19.732	0'41.981		1'19.732	0'41.981		1'22.361	0'43.584		1'24.543	0'43.875	
18 <sup>a</sup> - 3	2'04.912	0'43.765		3'29.522	0'43.255		2'03.901	0'44.169		2'03.901	0'44.169		2'07.956	0'45.595		2'08.803	0'44.260	
19 <sup>a</sup> - 1	0'37.990	0'37.990	236.324	0'40.804	0'40.804	255.320	0'40.629	0'40.629		0'40.629	0'40.629							

LAP ANALYSIS Free practice 2

On October 03 - 04  
Autodromo di Monza

Number	25			49			51			52			53			55		
Lap	Lap Time	Partial	Speed	Lap Time	Partial	Speed	Lap Time	Partial	Speed	Lap Time	Partial	Speed	Lap Time	Partial	Speed	Lap Time	Partial	Speed
<b>Ideal Lap</b>				<b>Ideal Lap</b>			<b>Ideal Lap</b>			<b>Ideal Lap</b>			<b>Ideal Lap</b>			<b>Ideal Lap</b>		
	0'37.678	0'37.678		0'36.569	0'36.569		0'37.215	0'37.215		0'37.751	0'37.751		0'37.595	0'37.595		0'37.874	0'37.874	
	1'18.310	0'40.632		1'18.225	0'41.656		1'17.956	0'40.741		1'19.339	0'41.588		1'19.736	0'42.141		1'18.716	0'40.842	
	2'00.717	0'42.407		2'00.989	0'42.764		1'59.727	0'41.771		2'02.032	0'42.693		2'02.875	0'43.139		2'01.203	0'42.487	
<b>Ideal Best Lap</b>																		
	0'36.569	0'36.569																
	1'17.201	0'40.632																
	1'58.972	0'41.771																



On October 03 - 04  
Autodromo di Monza

LAP ANALYSIS Free practice 2

Number	62			90		
	Lap Time	Partial	Speed	Lap Time	Partial	Speed
1 <sup>a</sup> - 1	2'09.981	2'09.981	144.967	0'39.027	0'39.027	226.415
1 <sup>a</sup> - 2	2'54.677	0'44.696		1'23.519	0'44.492	
1 <sup>a</sup> - 3	3'39.460	0'44.783		2'07.353	0'43.834	
2 <sup>a</sup> - 1	0'42.990	0'42.990	192.514	0'38.500	0'38.500	243.244
2 <sup>a</sup> - 2	1'31.356	0'48.366		1'22.005	0'43.505	
2 <sup>a</sup> - 3	2'27.635	0'56.279	PIT	2'05.676	0'43.671	
3 <sup>a</sup> - 1	10'52.332	10'52.332	172.801	0'38.802	0'38.802	210.938
3 <sup>a</sup> - 2	11'37.466	0'45.134		1'22.803	0'44.001	
3 <sup>a</sup> - 3	12'23.026	0'45.560		2'17.192	0'54.389	PIT
4 <sup>a</sup> - 1	0'41.963	0'41.963	203.390	8'59.002	8'59.002	211.351
4 <sup>a</sup> - 2	1'30.045	0'48.082		9'41.904	0'42.902	
4 <sup>a</sup> - 3	2'14.327	0'44.282		10'25.337	0'43.433	
5 <sup>a</sup> - 1	0'39.018	0'39.018	206.501	0'38.301	0'38.301	226.416
5 <sup>a</sup> - 2	1'23.204	0'44.186		1'21.402	0'43.101	
5 <sup>a</sup> - 3	2'07.606	0'44.402		2'04.835	0'43.433	
6 <sup>a</sup> - 1	0'38.858	0'38.858	203.390	0'38.019	0'38.019	228.330
6 <sup>a</sup> - 2	1'23.359	0'44.501		1'21.205	0'43.186	
6 <sup>a</sup> - 3	2'07.536	0'44.177		2'04.432	0'43.227	
7 <sup>a</sup> - 1	0'39.288	0'39.288	196.364	0'38.435	0'38.435	224.533
7 <sup>a</sup> - 2	1'24.068	0'44.780		1'21.837	0'43.402	
7 <sup>a</sup> - 3	2'20.623	0'56.555	PIT	2'13.107	0'51.270	PIT
8 <sup>a</sup> - 1	5'50.574	5'50.574	153.628	4'12.694	4'12.694	206.107
8 <sup>a</sup> - 2	6'35.155	0'44.581		4'55.176	0'42.482	
8 <sup>a</sup> - 3	7'19.287	0'44.132		5'38.200	0'43.024	
9 <sup>a</sup> - 1	0'39.417	0'39.417	192.171	0'38.022	0'38.022	255.925
9 <sup>a</sup> - 2	1'23.101	0'43.684		1'19.937	0'41.915	
9 <sup>a</sup> - 3	2'07.817	0'44.716		2'02.202	0'42.265	
10 <sup>a</sup> - 1	0'38.533	0'38.533	206.501	0'37.289	0'37.289	241.611
10 <sup>a</sup> - 2	1'22.955	0'44.422		1'19.410	0'42.121	
10 <sup>a</sup> - 3	2'06.844	0'43.889		2'01.604	0'42.194	
11 <sup>a</sup> - 1	0'39.095	0'39.095	200.001	0'38.055	0'38.055	232.259
11 <sup>a</sup> - 2	1'22.753	0'43.658		1'20.962	0'42.907	
11 <sup>a</sup> - 3	2'16.516	0'53.763	PIT	2'12.641	0'51.679	PIT
12 <sup>a</sup> - 1	4'29.627	4'29.627		2'57.910	2'57.910	145.553
12 <sup>a</sup> - 2	5'31.069	1'01.442		3'40.700	0'42.790	
12 <sup>a</sup> - 3	6'30.164	0'59.095	PIT	4'24.219	0'43.519	
13 <sup>a</sup> - 1	2'44.070	2'44.070	160.954	0'38.567	0'38.567	216.433
13 <sup>a</sup> - 2	3'35.643	0'51.573		1'20.680	0'42.113	
13 <sup>a</sup> - 3	4'28.226	0'52.583		2'03.678	0'42.998	
14 <sup>a</sup> - 1	0'44.844	0'44.844	177.050	0'38.132	0'38.132	223.603
14 <sup>a</sup> - 2	1'27.837	0'42.993		1'20.086	0'41.954	
14 <sup>a</sup> - 3	2'11.158	0'43.321		2'03.249	0'43.163	
15 <sup>a</sup> - 1	0'40.591	0'40.591	177.340	0'37.887	0'37.887	226.416
15 <sup>a</sup> - 2	1'22.477	0'41.886		1'19.834	0'41.947	
15 <sup>a</sup> - 3	2'13.996	0'51.519	PIT	2'02.999	0'43.165	
16 <sup>a</sup> - 1				0'38.719	0'38.719	227.369
16 <sup>a</sup> - 2				1'20.577	0'41.858	
16 <sup>a</sup> - 3				2'03.830	0'43.253	
17 <sup>a</sup> - 1				0'37.890	0'37.890	216.433
17 <sup>a</sup> - 2				1'19.328	0'41.438	
17 <sup>a</sup> - 3				2'02.276	0'42.948	
18 <sup>a</sup> - 1				0'37.795	0'37.795	236.324
18 <sup>a</sup> - 2				1'19.189	0'41.394	
18 <sup>a</sup> - 3				2'01.980	0'42.791	
19 <sup>a</sup> - 1				0'38.256	0'38.256	227.849
19 <sup>a</sup> - 2				1'24.539	0'46.283	
19 <sup>a</sup> - 3				2'07.290	0'42.751	
20 <sup>a</sup> - 1				0'40.739	0'40.739	234.274
20 <sup>a</sup> - 2				1'24.308	0'43.569	
20 <sup>a</sup> - 3				2'18.280	0'53.972	PIT
21 <sup>a</sup> - 1						
21 <sup>a</sup> - 2						
21 <sup>a</sup> - 3						
22 <sup>a</sup> - 1						
22 <sup>a</sup> - 2						
22 <sup>a</sup> - 3						
23 <sup>a</sup> - 1						
23 <sup>a</sup> - 2						
23 <sup>a</sup> - 3						
24 <sup>a</sup> - 1						
24 <sup>a</sup> - 2						
24 <sup>a</sup> - 3						
25 <sup>a</sup> - 1						
25 <sup>a</sup> - 2						
25 <sup>a</sup> - 3						



On October 03 - 04  
Autodromo di Monza

LAP ANALYSIS Free practice 2

Number	62			90		
Lap	Lap Time	Partial	Speed	Lap Time	Partial	Speed

Ideal Lap	
0'38.533	0'38.533
1'20.419	0'41.886
2'03.740	0'43.321

Ideal Lap	
0'37.289	0'37.289
1'18.683	0'41.394
2'00.877	0'42.194

Ideal Best Lap	
0'36.569	0'36.569
1'17.201	0'40.632
1'58.972	0'41.771



**Free practice 2 Sectors Results**

Sector - 1			Sector - 2			Sector - 3			Ideal Lap vs Best Lap			
Ord.	Nº Driver	Time	Nº Driver	Time	Nº Driver	Time	Ord.	Nº Driver	Ideal Lap	Best Lap	Ord.	
1	49 Mallegol - Blank	36.569	25 Lancieri - Fornaroli	40.632	51 Lathouras - Rugolo	41.771	1	51 Lathouras - Rugolo	1'59.727	2'00.275	1	
2	51 Lathouras - Rugolo	37.215	5 Caccia - Bontempelli	40.708	5 Caccia - Bontempelli	41.950	2	5 Caccia - Bontempelli	2'00.560	2'00.606	2	
3	90 Pérez - Giammaria	37.289	51 Lathouras - Rugolo	40.741	90 Pérez - Giammaria	42.194	3	25 Lancieri - Fornaroli	2'00.717	2'02.854	10	
4	2 Ramos - Parente	37.476	55 Sdanewitsch - Melnikov	40.842	2 Ramos - Parente	42.329	4	90 Pérez - Giammaria	2'00.877	2'01.604	6	
5	3 Balzan - Benucci	37.592	3 Balzan - Benucci	41.324	25 Lancieri - Fornaroli	42.407	5	49 Mallegol - Blank	2'00.989	2'01.227	3	
6	53 Barreiros - Guedes	37.595	90 Pérez - Giammaria	41.394	3 Balzan - Benucci	42.417	6	55 Sdanewitsch - Melnikov	2'01.203	2'01.596	5	
7	22 Balfe - Keen	37.613	22 Balfe - Keen	41.524	55 Sdanewitsch - Melnikov	42.487	7	3 Balzan - Benucci	2'01.333	2'01.525	4	
8	25 Lancieri - Fornaroli	37.678	52 Cameron - Griffin	41.588	52 Cameron - Griffin	42.693	8	22 Balfe - Keen	2'01.856	2'02.542	8	
9	52 Cameron - Griffin	37.751	49 Mallegol - Blank	41.656	22 Balfe - Keen	42.719	9	2 Ramos - Parente	2'01.986	2'01.986	7	
10	55 Sdanewitsch - Melnikov	37.874	12 Sini - Puglisi	41.662	49 Mallegol - Blank	42.764	10	52 Cameron - Griffin	2'02.032	2'02.579	9	
11	5 Caccia - Bontempelli	37.902	62 James Abbott	41.886	12 Sini - Puglisi	43.129	11	53 Barreiros - Guedes	2'02.875	2'03.660	12	
12	12 Sini - Puglisi	38.197	53 Barreiros - Guedes	42.141	53 Barreiros - Guedes	43.139	12	12 Sini - Puglisi	2'02.988	2'03.504	11	
13	62 James Abbott	38.533	2 Ramos - Parente	42.181	62 James Abbott	43.321	13	62 James Abbott	2'03.740	2'06.844	13	
14	10 Hankey - Yoluc	39.034	10 Hankey - Yoluc	43.105	10 Hankey - Yoluc	44.515	14	10 Hankey - Yoluc	2'06.654	2'06.958	14	



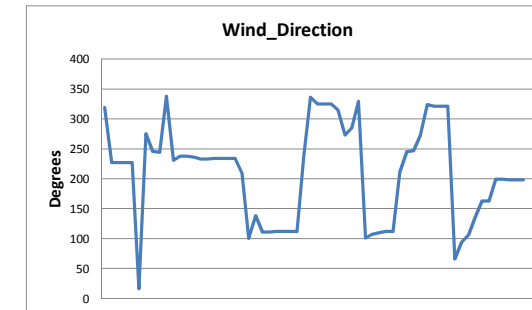
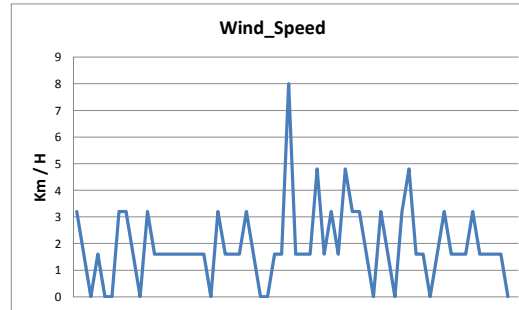
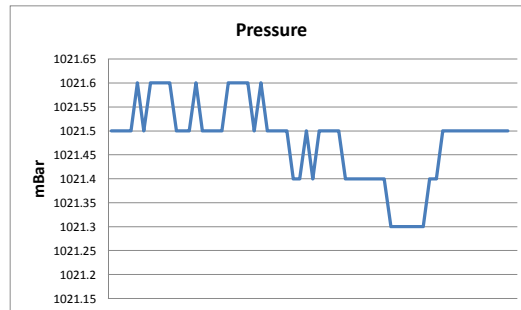
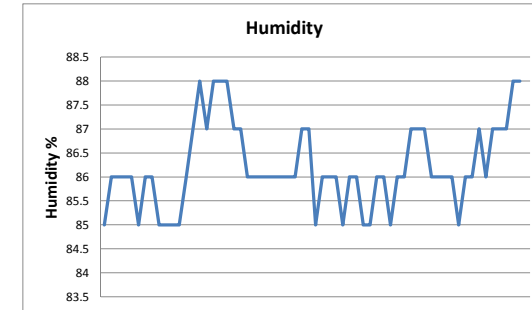
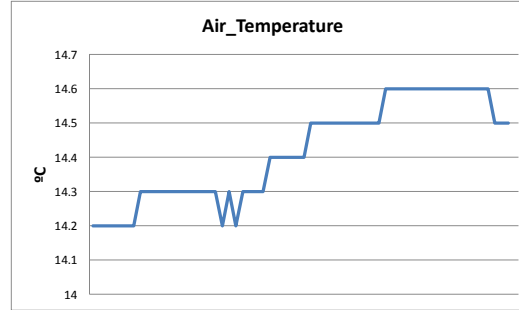
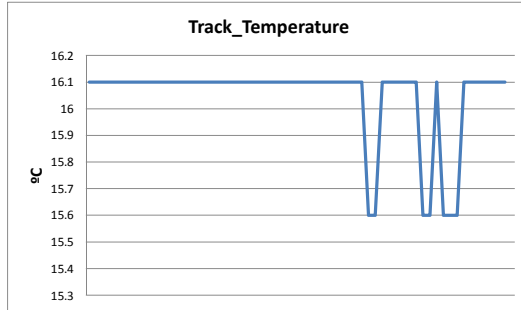
**Free practice 2 MAXIMUM SPEED**

Ord.	Nº	Entrant	Nat.	Driver	Nat.	St.	Driver 2	Nat.	St.	Vehicle	Cat.	Cl.	Km/h
1	2	Teo Martin M.	ESP	Miguel Ramos	PRT	Silver	Álvaro Parente	PRT	Platinum	McLaren 650S	GP	1º	263.415
2	3	S. Villorba Corse	ITA	Alessandro Balzan	ITA	Gold	Nicola Benucci	ITA	Bronze	Ferrari 458 Italia	GP	2º	260.870
3	49	AF Corse	ITA	Yannick Mallegol	FRA	Bronze	Howard Blank	ITA	Bronze	Ferrari 458 Italia	GA	1º	258.374
4	90	AF Corse	ITA	Ezequiel Pérez Companc	ARG	Bronze	Raffaele Giammaria	ITA	Gold	Ferrari 458 Italia	GP	3º	255.925
5	52	AF Corse	ITA	Duncan Cameron	GBR	Bronze	Matt Griffin	IRL	Gold	Ferrari 458 Italia	GP	4º	255.320
6	51	AF Corse	ITA	Pasin Lathouras	THA	Silver	Michele Rugolo	ITA	Gold	Ferrari 458 Italia	GP	5º	254.118
7	55	AF Corse	ITA	Claudio Sdanewitsch	DEU	Bronze	Ilya Melnikov	RUS	Bronze	Ferrari 458 Italia	GA	2º	253.522
8	5	Drivex School	ESP	Beniamino Caccia	ITA	Bronze	Lorenzo Bontempelli	ITA	Silver	Audi R8 LMS Ultra	GP	6º	252.337
9	22	Balfe Motorsport	GBR	Shaun Balfe	GBR	Bronze	Phil Keen	GBR	Silver	Ferrari 458 Italia	GP	7º	246.576
10	10	TF Sport	GBR	Euan Hankey	GBR	Silver	Salih Yoluc	TUR	Bronze	Aston Martin Vantage	GP	8º	246.014
11	53	AF Corse	ITA	Filipe Barreiros	PRT	Bronze	Francisco Guedes	PRT	Bronze	Ferrari 458 Italia	GA	3º	243.793
12	25	MP1 Corse	ITA	Valentino Fornaroli	ITA	Bronze				Ferrari 458 Italia	GP	9º	239.468
13	12	Solaris Motorsport	ITA	Francesco Sini	ITA	Gold	Marcello Puglisi	ITA	Bronze	Chevrolet Corvette	GP	10º	237.363
14	62	Radical Sportscars	GBR	James Abbott	GBR	Bronze				Radical RXC V8	CA	1º	206.501

**WEATHER REPORT Free practice 2**

Autodromo di Monza  
On October 03 - 04

Track Status **WET**



**FREE PRACTICES RESULTS**

Ord.	Nº	Entrant	Nat.	Driver	Nat.	St.	Driver_2	Nat.	St.	Vehicle	Cat.	Cla.	Laps	Laps1	BL1	Time-1	Laps2	BL2	Time-2	Best	Km/h
1	51	AF Corse	ITA	Pasin Lathouras	THA	Silver	Michele Rugolo	ITA	Gold	Ferrari 458 Italia	GP	1º	34	23	8	1'48.196	11	4	2'00.275	<b>1'48.196</b>	192.750
2	2	Teo Martin M.	ESP	Miguel Ramos	PRT	Silver	Álvaro Parente	PRT	Platinum	McLaren 650S	GP	2º	36	23	8	1'48.234	13	10	2'01.986	<b>1'48.234</b>	192.683
3	90	AF Corse	ITA	Ezequiel Pérez Companc	ARG	Bronze	Raffaele Giammaria	ITA	Gold	Ferrari 458 Italia	GP	3º	43	22	11	1'48.325	21	11	2'01.604	<b>1'48.325</b>	192.521
4	52	AF Corse	ITA	Duncan Cameron	GBR	Bronze	Matt Griffin	IRL	Gold	Ferrari 458 Italia	GP	4º	42	20	6	1'48.559	22	21	2'02.579	<b>1'48.559</b>	192.106
5	3	S. Villorba Corse	ITA	Alessandro Balzan	ITA	Gold	Nicola Benucci	ITA	Bronze	Ferrari 458 Italia	GP	5º	50	25	5	1'48.564	25	23	2'01.525	<b>1'48.564</b>	192.097
6	55	AF Corse	ITA	Claudio Sdanewitsch	DEU	Bronze	Ilya Melnikov	RUS	Bronze	Ferrari 458 Italia	GA	1º	40	15	14	1'49.207	25	24	2'01.596	<b>1'49.207</b>	190.966
7	25	MP1 Corse	ITA	Valentino Fornaroli	ITA	Bronze				Ferrari 458 Italia	GP	6º	49	23	11	1'49.507	26	25	2'02.854	<b>1'49.507</b>	190.443
8	53	AF Corse	ITA	Filipe Barreiros	PRT	Bronze	Francisco Guedes	PRT	Bronze	Ferrari 458 Italia	GA	2º	46	21	11	1'49.541	25	24	2'03.660	<b>1'49.541</b>	190.384
9	10	TF Sport	GBR	Euan Hankey	GBR	Silver	Salih Yoluc	TUR	Bronze	Aston Martin Vantage	GP	7º	31	7	6	1'50.491	24	20	2'06.958	<b>1'50.491</b>	188.747
10	22	Balfe Motorsport	GBR	Shaun Balfe	GBR	Bronze	Phil Keen	GBR	Silver	Ferrari 458 Italia	GP	8º	47	23	10	1'50.624	24	23	2'02.542	<b>1'50.624</b>	188.520
11	12	Solaris Motorsport	ITA	Francesco Sini	ITA	Gold	Marcello Puglisi	ITA	Bronze	Chevrolet Corvette	GP	9º	45	22	7	1'50.696	23	21	2'03.504	<b>1'50.696</b>	188.397
12	49	AF Corse	ITA	Yannick Mallegol	FRA	Bronze	Howard Blank	ITA	Bronze	Ferrari 458 Italia	GA	3º	45	22	8	1'52.652	23	22	2'01.227	<b>1'52.652</b>	185.126
13	5	Drivex School	ESP	Beniamino Caccia	ITA	Bronze	Lorenzo Bontempelli	ITA	Silver	Audi R8 LMS Ultra	GP	10º	41	19	9	1'53.251	22	21	2'00.606	<b>1'53.251</b>	184.147
14	62	Radical Sportscars	GBR	James Abbott	GBR	Bronze				Radical RXC V8	CA	1º	18	2	2	7'14.946	16	11	2'06.844	<b>2'06.844</b>	164.413

Autodromo di Monza on October 02, 2015

At 17:30

**RACE DIRECTOR**

**TIMEKEEPER**



**Santisima Trinidad 30 28010 MADRID**  
Tel y Fax 91.448.32.06  
www.cronococa.com  
e-mail: info@cronococa.com




**Juan Bravo 17 28006 MADRID**  
Tel 91.432.27.50  
www.gt sport.es  
e-mail: info@gt sport.es