



**Circuit de Spa
International GT Open
RACE 2**

CLASSIFICATION

22/05/2016

Clas.	Nº	Entrant / Team	Nat.	Driver	Nat.	St.	Driver 2	Nat.	St.	Vehicle	Cat.	Clas.	Laps	Total Time	Km/h.	Gap	Best	Time	Km/h.
1	14	V8 Racing	NLD	<u>Nicky Pastorelli</u>	ITA	Platinum	Joshua Webster	GBR	Silver	Renault RS01 GT3	GP	1º	19	1.00'34.597	131.810		16	2'40.761	156.845
2	59	Garage 59	GBR	<u>Michael Benham</u>	GBR	Bronze	Duncan Tappy	GBR	Gold	McLaren 650 S GT3	GP	2º	19	1.00'39.799	131.621	5"202	17	2'40.287	157.308
3	49	AF Corse	ITA	<u>Alex Moiseev</u>	RUS	Bronze	Marco Cioci	ITA	Gold	Ferrari 458 Italia GT3	GP	3º	19	1.00'43.245	131.497	8"648	10	2'40.244	157.351
4	22	Shaun Balfe / Balfe Motorsport	GBR	<u>Shaun Balfe</u>	GBR	Bronze	Phil Keen	GBR	Silver	Ferrari 458 Italia GT3	GP	4º	19	1.00'57.664	130.979	23"067	19	2'42.133	155.517
5	27	Orange 1 T. Lazarus	ITA	<u>Thomas Biagi</u>	ITA	Gold	Fabrizio Crestani	ITA	Silver	Lamborghini Huracan	GP	5º	19	1.00'58.294	130.956	23"697	18	2'42.379	155.282
6	34	TF Sport	GBR	<u>Euan Hankey</u>	GBR	Silver	Salih Yoluc	TUR	Bronze	Aston Martin Vantage	GP	6º	19	1.01'11.523	130.484	36"926	8	2'40.633	156.969
7	10	J.Abbot / Radical Works Team	GBR	<u>James Abbott</u>	GBR	Silver	Colin Noble	GBR	Bronze	Radical RXC Turbo GT3	GP	7º	19	1.01'12.553	130.448	37"956	15	2'43.142	154.555
8	1	RACE / BMW T. Teo Martin	ESP	Miguel Ramos	PRT	Silver	<u>Roldan Rodriguez</u>	ESP	Silver	BMW M6 GT3	GP	8º	19	1.01'27.279	129.927	52"682	15	2'44.204	153.556
9	88	Garage 59	GBR	Alexander West	SWE	Bronze	<u>Côme Ledogar</u>	FRA	Gold	McLaren 650 S GT3	GP	9º	19	1.01'57.529	128.869	1'22"932	8	2'41.522	156.106
10	15	V8 Racing	NLD	<u>Braams Max</u>	NLD	Bronze	Filipe Barreiros	PRT	Bronze	Renault RS01 GT3	GA	1º	19	1.02'02.533	128.696	1'27"936	8	2'44.618	153.170
11	64	Ebimotors	ITA	Emanuele Busnelli	ITA	Bronze	<u>Fabio Babini</u>	ITA	Platinum	Lamborghini Huracan	GP	10º	19	1.02'16.374	128.219	1'41"777	9	2'39.814	157.774
12	55	AF Corse	ITA	Claudio Sdanewitsch	DEU	Bronze	<u>Stéphane Lémeret</u>	BEL	Bronze	Ferrari 458 Italia GT3	GA	2º	19	1.02'23.288	127.983	1'48"691	7	2'43.563	154.158
13	99	Sports and You	PRT	Antonio Coimbra	PRT	Bronze	<u>Luis Silva</u>	PRT	Bronze	Mercedes AMG GT3	GA	3º	19	1.02'27.013	127.855	1'52"416	12	2'45.809	152.069
14	5	Drivex School	ESP	<u>Juan Cruz Alvarez</u>	GTM	Silver	Anna Rathe	NOR	Bronze	Audi R8 LMS Ultra	GP	11º	19	1.03'27.306	125.831	2'52"709	8	2'41.214	156.404

Fastest lap Busnelli - Babini 2'39.814 157.774 Km/h.

Car number 5. Time penalty +5 seconds. Art 39.6

Published at:.....

Track Status **WET**

Stewards:	Race Director:	Timekeeper:
------------------	-----------------------	------------------------



Circuit de Spa International GT Open RACE 2

Best Sectors Results

22/05/2016

Sector - 1		Sector - 2		Sector - 3		Ideal Lap vs Best Lap					
Ord.	Nº Driver	Time	Nº Driver	Time	Nº Driver	Time	Ord.	Nº Driver	Ideal Lap	Best Lap	Ord.
1	59 Benham - Tappy	43.263	64 Busnelli - Babini	1'15.193	59 Benham - Tappy	40.569	1	59 Benham - Tappy	2'39.733	2'40.287	3
2	49 Moiseev - Cioci	43.280	34 Hankey - Yoluc	1'15.627	49 Moiseev - Cioci	40.725	2	64 Busnelli - Babini	2'39.814	2'39.814	1
3	22 Balfe - Keen	43.440	14 Pastorelli - Webster	1'15.648	64 Busnelli - Babini	40.765	3	34 Hankey - Yoluc	2'39.913	2'40.633	4
4	34 Hankey - Yoluc	43.469	5 Alvarez - Rathe	1'15.755	34 Hankey - Yoluc	40.817	4	49 Moiseev - Cioci	2'40.098	2'40.244	2
5	27 Biagi - Crestani	43.571	59 Benham - Tappy	1'15.901	14 Pastorelli - Webster	40.826	5	14 Pastorelli - Webster	2'40.480	2'40.761	5
6	10 Abbott - Noble	43.674	49 Moiseev - Cioci	1'16.093	88 West - Ledogar	40.992	6	22 Balfe - Keen	2'40.839	2'42.133	8
7	64 Busnelli - Babini	43.856	88 West - Ledogar	1'16.184	22 Balfe - Keen	41.035	7	5 Alvarez - Rathe	2'40.928	2'41.214	6
8	88 West - Ledogar	44.005	22 Balfe - Keen	1'16.364	5 Alvarez - Rathe	41.037	8	88 West - Ledogar	2'41.181	2'41.522	7
9	14 Pastorelli - Webster	44.006	27 Biagi - Crestani	1'16.810	27 Biagi - Crestani	41.078	9	27 Biagi - Crestani	2'41.459	2'42.379	9
10	55 Sdanewitsch - Lémeret	44.068	55 Sdanewitsch - Lémeret	1'16.834	10 Abbott - Noble	41.297	10	10 Abbott - Noble	2'41.834	2'43.142	10
11	5 Alvarez - Rathe	44.136	10 Abbott - Noble	1'16.863	1 Ramos - Rodriguez	41.516	11	55 Sdanewitsch - Lémeret	2'42.529	2'43.563	11
12	1 Ramos - Rodriguez	44.722	15 Braams - Barreiros	1'17.220	55 Sdanewitsch - Lémeret	41.627	12	1 Ramos - Rodriguez	2'43.583	2'44.204	12
13	15 Braams - Barreiros	45.052	1 Ramos - Rodriguez	1'17.345	15 Braams - Barreiros	41.898	13	15 Braams - Barreiros	2'44.170	2'44.618	13
14	99 Coimbra - Silva	45.344	99 Coimbra - Silva	1'17.969	99 Coimbra - Silva	42.496	14	99 Coimbra - Silva	2'45.809	2'45.809	14



**Circuit de Spa
International GT Open
RACE 2**

BEST TOP SPEEDS

22/05/2016

Ord.	N°	Entrant / Team	Nat.	Driver	Nat.	St.	Driver 2	Nat.	St.	Vehicle	Cat.	Cla.	Top 1		Top 2		Top 3		Top 4		Top 5		Avg.
													Km/h	Lap	Km/h	Lap	Km/h	Lap	Km/h	Lap	Km/h	Lap	
1	22	Shaun Balfe / Balfe Motorsport	GBR	Shaun Balfe	GBR	Bronze	Phil Keen	GBR	Silver	Ferrari 458 Italia GT3	GP	1º	248.936	17	245.026	16	241.237	15	240.000	14	235.176	18	242.075
2	10	J.Abbot / Radical Works Team	GBR	James Abbott	GBR	Silver	Colin Noble	GBR	Bronze	Radical RXC Turbo GT3	GP	2º	245.026	16	242.487	17	235.176	15	230.542	14	230.542	18	236.755
3	14	V8 Racing	NLD	Nicky Pastorelli	ITA	Platinum	Joshua Webster	GBR	Silver	Renault RS01 GT3	GP	3º	243.750	8	230.542	16	227.184	18	226.087	19	223.923	9	230.297
4	34	TF Sport	GBR	Euan Hankey	GBR	Silver	Salih Yoluc	TUR	Bronze	Aston Martin Vantage	GP	4º	243.750	9	242.487	7	237.563	10	236.364	19	232.836	8	238.600
5	55	AF Corse	ITA	Claudio Sdanewitsch	DEU	Bronze	Stéphane Lémeret	BEL	Bronze	Ferrari 458 Italia GT3	GA	1º	243.750	7	221.801	6	221.801	17	215.668	8	205.263	15	221.657
6	88	Garage 59	GBR	Alexander West	SWE	Bronze	Côme Ledogar	FRA	Gold	McLaren 650 S GT3	GP	5º	241.237	10	240.000	8	232.836	18	230.542	9	229.412	7	234.805
7	99	Sports and You	PRT	Antonio Coimbra	PRT	Bronze	Luis Silva	PRT	Bronze	Mercedes AMG GT3	GA	2º	241.237	13	241.237	17	238.776	12	237.563	19	236.364	10	239.035
8	49	AF Corse	ITA	Alex Moiseev	RUS	Bronze	Marco Cioci	ITA	Gold	Ferrari 458 Italia GT3	GP	6º	237.563	17	237.563	12	237.563	15	235.176	16	228.293	10	235.232
9	64	Ebimotors	ITA	Emanuele Busnelli	ITA	Bronze	Fabio Babini	ITA	Platinum	Lamborghini Huracan	GP	7º	235.176	14	226.087	10	226.087	18	226.087	19	220.755	9	226.838
10	59	Garage 59	GBR	Michael Benham	GBR	Bronze	Duncan Tappy	GBR	Gold	McLaren 650 S GT3	GP	8º	234.000	18	234.000	19	230.542	16	226.087	17	221.801	15	229.286
11	1	RACE / BMW T. Teo Martin	ESP	Miguel Ramos	PRT	Silver	Roldan Rodriguez	ESP	Silver	BMW M6 GT3	GP	9º	230.542	6	230.542	18	228.293	19	211.765	11	208.929	12	222.014
12	5	Drivex School	ESP	Juan Cruz Alvarez	GTM	Silver	Anna Rathe	NOR	Bronze	Audi R8 LMS Ultra	GP	10º	228.293	17	225.000	9	221.801	16	220.755	10	219.718	18	223.113
13	27	Orange 1 T. Lazarus	ITA	Thomas Biagi	ITA	Gold	Fabrizio Crestani	ITA	Silver	Lamborghini Huracan	GP	11º	228.293	17	227.184	19	221.801	9	220.755	18	218.692	15	223.345
14	15	V8 Racing	NLD	Braams Max	NLD	Bronze	Filipe Barreiros	PRT	Bronze	Renault RS01 GT3	GA	3º	210.811	9	208.000	19	202.597	17	202.597	18	200.858	8	204.973





Circuit de Spa International GT Open RACE 2

FASTEST LAP SEQUENCE

22/05/2016

Time of Day	Session Time	Nº	Entrant / Team	Nat.	Driver	Nat.	St.	Driver 2	Nat.	St.	Vehicle	Cat.	Time	Km/h	Lap
14:33'48.625	4'41.973	88	Garage 59	GBR	Alexander West	SWE	Bronze	Côme Ledogar	FRA	Gold	McLaren 650 S GT3	GP	4'41.973	89.421	1
14:38'08.206	9'01.803	88	Garage 59	GBR	Alexander West	SWE	Bronze	Côme Ledogar	FRA	Gold	McLaren 650 S GT3	GP	4'19.830	97.042	2
14:38'08.496	9'01.947	1	RACE / BMW T. Teo Martin	ESP	Miguel Ramos	PRT	Silver	Roldan Rodriguez	ESP	Silver	BMW M6 GT3	GP	4'18.982	97.360	2
14:38'09.316	9'02.892	14	V8 Racing	NLD	Nicky Pastorelli	ITA	Platinum	Joshua Webster	GBR	Silver	Renault RS01 GT3	GP	4'18.783	97.435	2
14:38'12.366	9'05.441	55	AF Corse	ITA	Claudio Sdanewitsch	DEU	Bronze	Stéphane Lémeret	BEL	Bronze	Ferrari 458 Italia GT3	GA	4'18.102	97.692	2
14:38'19.650	9'12.953	5	Drivex School	ESP	Juan Cruz Alvarez	GTM	Silver	Anna Rathe	NOR	Bronze	Audi R8 LMS Ultra	GP	4'16.898	98.149	2
14:42'16.627	13'10.394	88	Garage 59	GBR	Alexander West	SWE	Bronze	Côme Ledogar	FRA	Gold	McLaren 650 S GT3	GP	4'08.591	101.429	3
14:42'16.917	13'10.509	1	RACE / BMW T. Teo Martin	ESP	Miguel Ramos	PRT	Silver	Roldan Rodriguez	ESP	Silver	BMW M6 GT3	GP	4'08.562	101.441	3
14:42'17.537	13'11.140	14	V8 Racing	NLD	Nicky Pastorelli	ITA	Platinum	Joshua Webster	GBR	Silver	Renault RS01 GT3	GP	4'08.248	101.569	3
14:42'21.718	13'15.123	27	Orange 1 T. Lazarus	ITA	Thomas Biagi	ITA	Gold	Fabrizio Crestani	ITA	Silver	Lamborghini Huracan	GP	4'08.213	101.584	3
14:42'26.770	13'19.887	22	Shaun Balfe / Balfe Motorsport	GBR	Shaun Balfe	GBR	Bronze	Phil Keen	GBR	Silver	Ferrari 458 Italia GT3	GP	4'07.926	101.701	3
14:42'27.170	13'20.593	5	Drivex School	ESP	Juan Cruz Alvarez	GTM	Silver	Anna Rathe	NOR	Bronze	Audi R8 LMS Ultra	GP	4'07.640	101.819	3
14:42'30.212	13'23.714	99	Sports and You	PRT	Antonio Coimbra	PRT	Bronze	Luis Silva	PRT	Bronze	Mercedes AMG GT3	GA	4'07.460	101.893	3
14:46'15.936	17'09.447	88	Garage 59	GBR	Alexander West	SWE	Bronze	Côme Ledogar	FRA	Gold	McLaren 650 S GT3	GP	3'59.053	105.476	4
14:46'23.028	17'16.892	59	Garage 59	GBR	Michael Benham	GBR	Bronze	Duncan Tappy	GBR	Gold	McLaren 650 S GT3	GP	3'58.620	105.668	4
14:46'27.660	17'21.206	49	AF Corse	ITA	Alex Moiseev	RUS	Bronze	Marco Cioci	ITA	Gold	Ferrari 458 Italia GT3	GP	3'58.383	105.773	4
14:53'13.753	24'07.073	88	Garage 59	GBR	Alexander West	SWE	Bronze	Côme Ledogar	FRA	Gold	McLaren 650 S GT3	GP	2'42.741	154.936	6
14:55'55.960	1'01.294	88	Garage 59	GBR	Alexander West	SWE	Bronze	Côme Ledogar	FRA	Gold	McLaren 650 S GT3	GP	2'41.987	155.657	7
14:55'58.991	1'04.928	34	TF Sport	GBR	Euan Hankey	GBR	Silver	Salih Yoluc	TUR	Bronze	Aston Martin Vantage	GP	2'41.302	156.318	7
14:58'40.229	3'45.561	34	TF Sport	GBR	Euan Hankey	GBR	Silver	Salih Yoluc	TUR	Bronze	Aston Martin Vantage	GP	2'40.633	156.969	8
15:00'13.718	5'19.688	59	Garage 59	GBR	Michael Benham	GBR	Bronze	Duncan Tappy	GBR	Gold	McLaren 650 S GT3	GP	2'40.366	157.230	8
15:01'23.471	6'29.432	64	Ebimotors	ITA	Emanuele Busnelli	ITA	Bronze	Fabio Babini	ITA	Platinum	Lamborghini Huracan	GP	2'39.814	157.773	9



Circuit de Spa
International GT Open
RACE 2

EVENT MAXIMUM SPEED

22/05/2016

Ord.	Nº	Entrant / Team	Nat.	Driver	Nat.	St.	Driver 2	Nat.	St.	Vehicle	Cat.	Cl.	Km/h	Lap	Session
1	10	J.Abbot / Radical Works Team	GBR	James Abbott	GBR	Silver	Colin Noble	GBR	Bronze	Radical RXC Turbo GT3	GP	1º	275.294	5	Qualifying 1
2	88	Garage 59	GBR	Alexander West	SWE	Bronze	Côme Ledogar	FRA	Gold	McLaren 650 S GT3	GP	2º	273.685	13	RACE 1
3	1	RACE / BMW T. Teo Martin	ESP	Miguel Ramos	PRT	Silver	Roldan Rodriguez	ESP	Silver	BMW M6 GT3	GP	3º	272.094	4	Qualifying 1
4	27	Orange 1 T. Lazarus	ITA	Thomas Biagi	ITA	Gold	Fabrizio Crestani	ITA	Silver	Lamborghini Huracan	GP	4º	272.094	4	Qualifying 1
5	49	AF Corse	ITA	Alex Moiseev	RUS	Bronze	Marco Cioci	ITA	Gold	Ferrari 458 Italia GT3	GP	5º	272.094	7	Qualifying 1
6	22	Shaun Balfe / Balfe Motorsport	GBR	Shaun Balfe	GBR	Bronze	Phil Keen	GBR	Silver	Ferrari 458 Italia GT3	GP	6º	272.093	3	Qualifying 1
7	2	RACE / BMW T. Teo Martin	ESP	Gustavo Yacaman	COL	Gold	Fernando Monje	ESP	Silver	BMW M6 GT3	GP	7º	270.521	8	Qualifying 1
8	55	AF Corse	ITA	Claudio Sdanewitsch	DEU	Bronze	Stéphane Lémeret	BEL	Bronze	Ferrari 458 Italia GT3	GA	1º	270.521	5	Free Practice 2
9	34	TF Sport	GBR	Euan Hankey	GBR	Silver	Salih Yoluc	TUR	Bronze	Aston Martin Vantage	GP	8º	268.966	5	Qualifying 2
10	59	Garage 59	GBR	Michael Benham	GBR	Bronze	Duncan Tappy	GBR	Gold	McLaren 650 S GT3	GP	9º	268.966	8	Free Practice 2
11	64	Ebimotors	ITA	Emanuele Busnelli	ITA	Bronze	Fabio Babini	ITA	Platinum	Lamborghini Huracan	GP	10º	267.429	4	Qualifying 2
12	14	V8 Racing	NLD	Nicky Pastorelli	ITA	Platinum	Joshua Webster	GBR	Silver	Renault RS01 GT3	GP	11º	264.407	24	RACE 1
13	15	V8 Racing	NLD	Braams Max	NLD	Bronze	Filipe Barreiros	PRT	Bronze	Renault RS01 GT3	GA	2º	264.407	6	Qualifying 2
14	5	Drivex School	ESP	Juan Cruz Alvarez	GTM	Silver	Anna Rathe	NOR	Bronze	Audi R8 LMS Ultra	GP	12º	262.922	7	Free Practice 2
15	99	Sports and You	PRT	Antonio Coimbra	PRT	Bronze	Luis Silva	PRT	Bronze	Mercedes AMG GT3	GA	3º	262.922	7	Qualifying 1

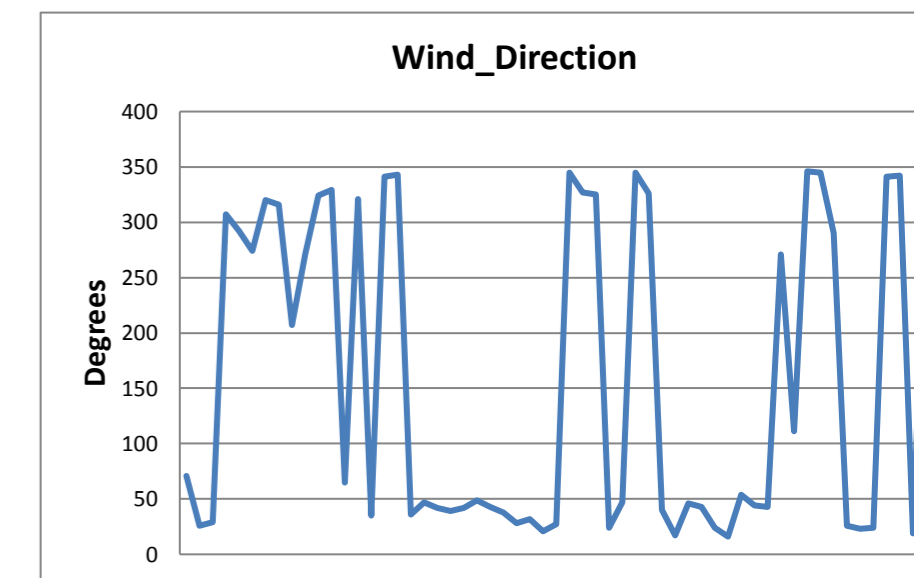
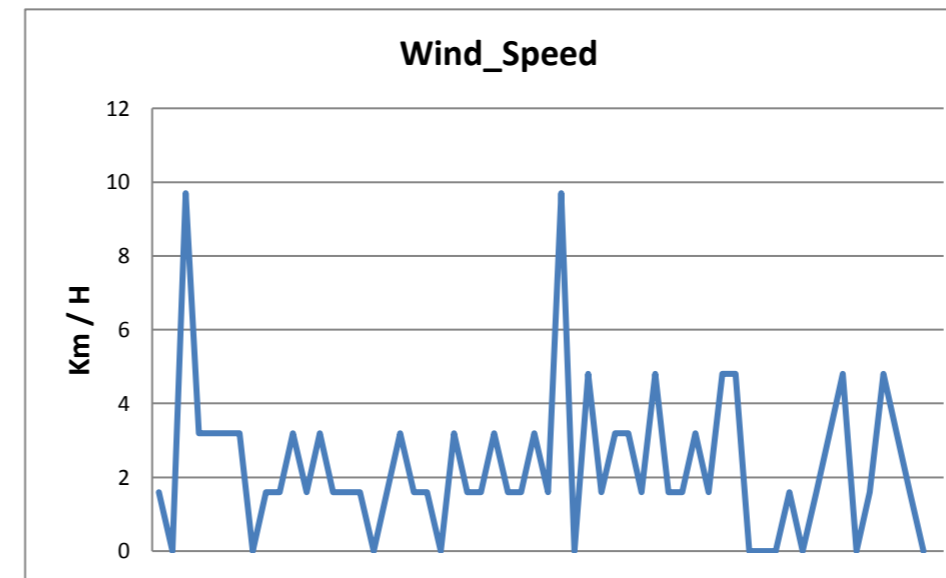
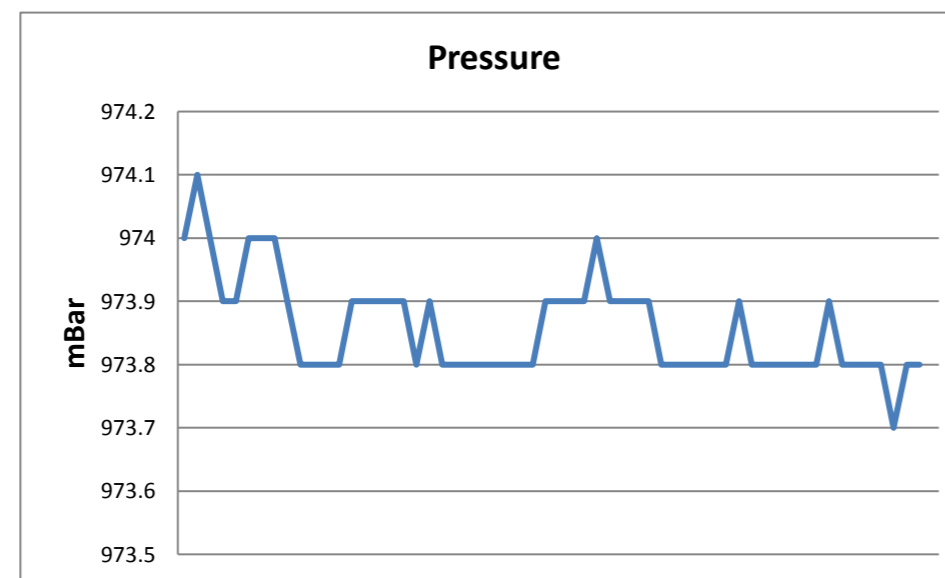
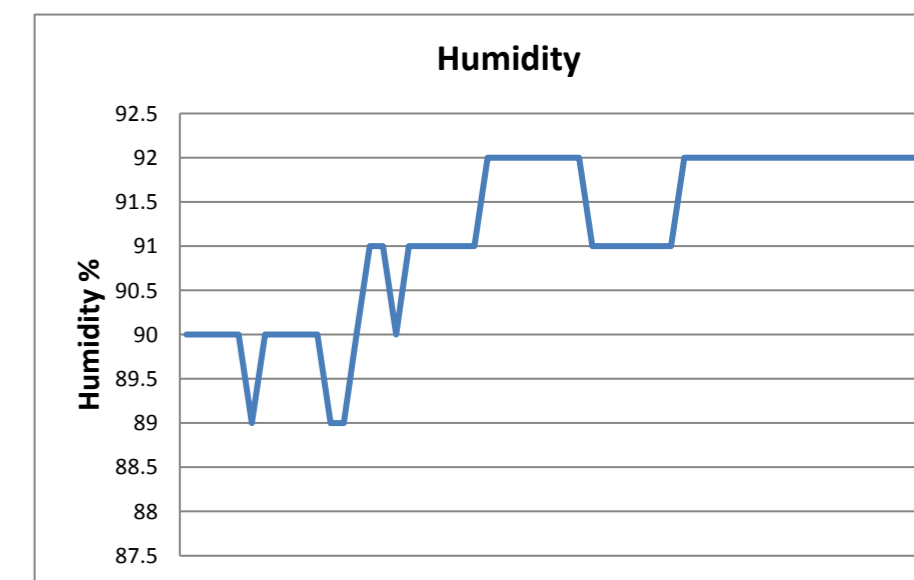
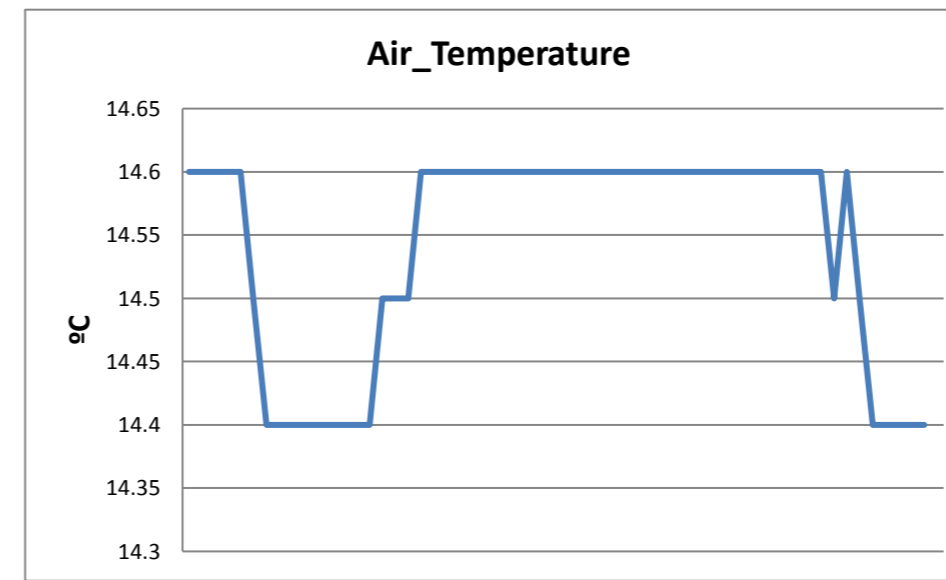
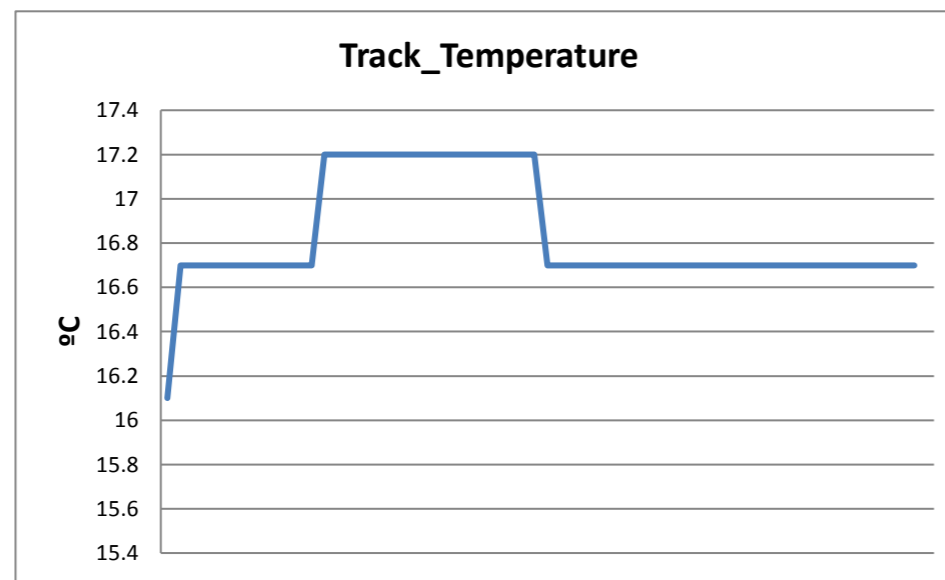




**Circuit de Spa
International GT Open
RACE 2**

WEATHER REPORT

Track Status WET





Circuit de Spa
International GT Open
RACE 2

LAP CHART

22/05/2016

Order	Start	GAP / LT	1 ^a	GAP / LT	2 ^a	GAP / LT	3 ^a	GAP / LT	4 ^a	GAP / LT	5 ^a	GAP / LT	6 ^a	GAP / LT	7 ^a	GAP / LT	8 ^a	GAP / LT	9 ^a	GAP / LT	10 ^a	GAP / LT	11 ^a	GAP / LT	12 ^a	GAP / LT	13 ^a	GAP / LT	14 ^a	GAP / LT	15 ^a	GAP / LT	16 ^a	GAP / LT		
1 ^o	88	2'17.073	88	4'41.973	88	4'19.83	88	4'08.591	88	3'59.053	88	4'14.885	88	2'42.741	88	2'41.987	88	2'41.522	88	2'42.108	88	2'47.737	34	3'55.344	14	2'43.577	14	2'41.277	14	2'41.861	14	2'41.921	14	2'40.761		
2 ^o	1	0"051 2'17.124	1	0.992 4'42.965	1	0.144 4'18.982	1	0.115 4'08.562	1	1.184 4'00.122	1	1.526 4'15.227	1	3.942 2'45.157	34	3.634 2'41.302	34	2.745 2'40.633	34	1.570 2'40.933	34	1.214 2'47.381	14	2.904 2'41.676	34	3.303 2'49.784	34	8.487 2'46.461	49	8.614 2'40.726	49	7.577 2'40.884	49	7.973 2'41.157		
3 ^o	14	0"464 2'17.537	14	2.136 4'44.109	14	1.089 4'18.783	14	0.746 4'08.248	14	1.862 4'00.169	14	2.337 4'15.36	34	4.319 2'44.478	14	6.172 2'42.527	64	6.802 2'41.068	64	4.508 2'39.814	64	3.162 2'46.391	64	10.655 4'04.051	49	10.007 2'41.039	49	9.749 2'41.019	59	9.781 2'41.189	59	8.893 2'41.033	59	8.788 2'40.656		
4 ^o	34	0"521 2'17.594	34	2.586 4'44.559	34	1.560 4'18.804	34	1.516 4'08.547	34	2.514 4'00.051	34	2.582 4'14.953	14	5.632 2'46.036	64	7.256 2'42.392	14	12.414 2'47.764	5	12.784 2'41.859	5	14.551 2'49.504	49	15.449 2'44.188	59	10.626 2'40.947	59	10.453 2'41.104	34	14.141 2'47.515	34	18.423 2'46.203	22	20.490 2'42.585		
5 ^o	64	1"630 2'18.703	64	3.338 4'45.311	64	2.412 4'18.904	64	2.541 4'08.72	64	3.259 3'59.771	64	3.301 4'14.927	64	6.851 2'46.291	55	11.395 2'43.563	5	13.033 2'41.214	10	27.064 2'50.844	10	1'17.786 2'41.542	14	1'17.786 2'41.542	59	16.160 2'41.547	22	13.980 2'42.728	22	15.214 2'42.511	22	15.809 2'42.456	27	18.664 2'44.172	27	21.055 2'43.152
6 ^o	55	1"763 2'18.836	55	5.366 4'47.339	55	3.638 4'18.102	55	3.571 4'08.524	55	4.576 4'00.058	55	4.398 4'14.707	55	9.819 2'48.162	1	11.493 2'49.538	10	18.328 2'43.866	15	39.867 2'50.984	10	1'25.697 3'46.37	22	17.733 2'44.187	27	14.525 2'42.483	27	15.678 2'42.43	27	16.413 2'42.596	22	18.666 2'44.778	34	26.130 2'48.468		
7 ^o	10	1"766 2'18.839	27	6.679 4'48.652	27	5.107 4'18.258	27	4.729 4'08.213	27	5.698 4'00.022	27	5.513 4'14.7	10	12.375 2'48.535	5	13.341 2'42.189	55	20.317 2'50.444	14	1'23.981 3'53.675	49	1'27.819 2'40.244	27	18.523 2'44.107	10	20.364 2'45.644	10	23.594 2'44.507	10	25.784 2'44.051	10	27.005 2'43.142	10	29.662 2'43.418		
8 ^o	27	1"931 2'19.004	10	7.215 4'49.188	10	5.925 4'18.54	10	5.631 4'08.297	10	6.145 3'59.567	10	6.581 4'15.321	5	13.139 2'45.499	10	15.984 2'45.596	15	30.991 2'44.618	22	1'35.062 2'42.309	22	1'30.104 2'42.779	10	21.201 2'52.062	64	25.594 3'01.42	1	35.280 2'45.903	1	37.941 2'44.522	1	40.224 2'44.204	1	43.787 2'44.324		
9 ^o	59	2"227 2'19.300	59	9.248 4'51.221	59	8.151 4'18.733	59	7.878 4'08.318	59	7.445 3'58.62	59	9.217 4'16.657	27	15.425 2'52.653	27	26.767 2'53.329	22	1'34.861 3'42.208	49	1'35.312 2'41.798	27	1'30.974 2'42.567	88	27.032 4'23.59	88	30.065 2'49.514	64	38.575 2'54.258	88	48.023 2'50.013	88	53.578 2'47.476	88	1'02.379 2'49.562		
10 ^o	15	2"272 2'19.345	22	11.133 4'53.106	22	10.158 4'18.855	22	9.493 4'07.926	22	9.266 3'58.826	22	10.186 4'15.805	22	19.866 2'52.421	15	27.895 2'47.159	27	1'34.926 3'49.681	27	1'36.144 2'43.326	59	1'31.171 2'41.777	1	31.642 2'46.2	1	30.654 2'45.493	88	39.871 2'51.083	64	48.709 2'51.995	64	59.178 2'52.39	15	1'11.205 2'47.391		
11 ^o	5	2"504 2'19.577	15	12.998 4'54.971	5	11.150 4'16.898	5	10.199 4'07.64	5	10.659 3'59.513	5	10.381 4'14.607	15	22.723 2'54.339	22	34.175 2'56.296	1	1'34.978 4'05.007	59	1'37.131 2'42.367	1	1'42.000 2'46.712	5	38.942 4'20.949	15	45.602 2'48.846	15	51.959 2'47.634	15	59.069 2'48.971	15	1'04.575 2'47.427	64	1'12.237 2'53.82		
12 ^o	22	2"792 2'19.865	5	14.082 4'56.055	15	11.160 4'17.992	15	11.304 4'08.735	15	11.268 3'59.017	15	11.125 4'14.742	49	34.727 3'05.193	49	1'34.335 3'41.595	49	1'35.622 2'42.809	1	1'43.025 2'50.155	15	1'49.769 3'57.639	15	43.237 2'50.026	5	52.871 3'00.41	55	1'12.797 2'50.632	55	1'20.834 2'49.898	55	1'27.081 2'48.168	55	1'33.456 2'47.136		
13 ^o	49	4"473 2'21.546	49	15.002 4'56.975	49	12.646 4'17.474	49	12.429 4'08.374	49	11.759 3'58.383	49	12.275 4'15.401	59	36.827 3'10.351	59	1'38.028 3'43.188	59	1'36.872 2'40.366	55	1'53.307 4'15.098	55	2'00.755 2'55.185	55	58.411 2'54.214	55	1'03.442 2'51.512	5	1'14.608 3'03.014	99	1'22.044 2'47.607	99	1'28.930 2'48.807	99	1'35.132 2'46.963		
14 ^o	99	6"009 2'23.082	99	15.806 4'57.779	99	14.451 4'18.475	99	13.320 4'07.46	99	12.884 3'58.617	99	13.767 4'15.768	99	48.674 3'17.648	99	2'11.407 4'04.72	99	2'18.347 2'48.462	99	2'22.697 2'46.458	99	2'21.231 2'46.271	99	1'11.517 2'46.844	99	1'10.845 2'45.809	99	1'16.298 2'46.73	5	1'32.672 2'59.925	5	1'46.573 2'55.822	5	2'02.378 2'56.566		



Circuit de Spa
International GT Open
RACE 2

LAP CHART

22/05/2016

Order	17 ^a	GAP / LT	18 ^a	GAP / LT	19 ^a	GAP / LT
1 ^o	14	2'41.105	14	2'41.768	14	2'42.438
2 ^o	59	7.970 2'40.287	59	7.034 2'40.832	59	5.202 2'40.606
3 ^o	49	8.344 2'41.476	49	8.801 2'42.225	49	8.648 2'42.285
4 ^o	22	22.672 2'43.287	22	23.372 2'42.468	22	23.067 2'42.133
5 ^o	27	23.143 2'43.193	27	23.754 2'42.379	27	23.697 2'42.381
6 ^o	34	31.208 2'46.183	34	34.795 2'45.355	34	36.926 2'44.569
7 ^o	10	32.748 2'44.191	10	35.843 2'44.863	10	37.956 2'44.551
8 ^o	1	47.098 2'44.416	1	49.920 2'44.59	1	52.682 2'45.2
9 ^o	88	1'10.412 2'49.138	88	1'17.226 2'48.582	88	1'22.932 2'48.144
10 ^o	15	1'17.144 2'47.044	15	1'21.999 2'46.623	15	1'27.936 2'48.375
11 ^o	64	1'24.647 2'53.515	64	1'34.669 2'51.79	64	1'41.777 2'49.546
12 ^o	55	1'38.723 2'46.372	55	1'42.673 2'45.718	55	1'48.691 2'48.456
13 ^o	99	1'40.957 2'46.93	99	1'46.675 2'47.486	99	1'52.416 2'48.179
14 ^o	5	2'19.041 2'57.768	5	2'33.508 2'56.235	5	2'52.709 3'01.639



Circuit de Spa
International GT Open
RACE 2

GRAPHIC LAP CHART

22/05/2016

